

CCHCR1 antibody



Catalog Number: 108995

Product name

CCHCR1 antibody

IHC: 1:20-1:200

IF: 1:20-1:200

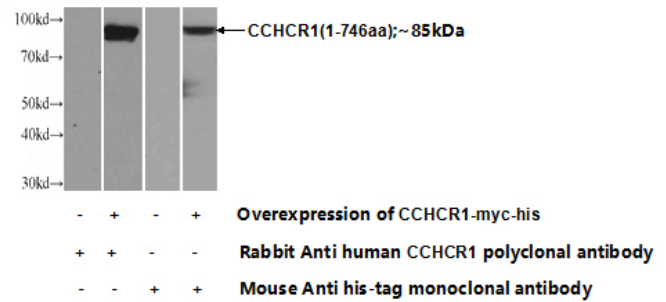
Specificity

Human; other species not tested.

Validations

Antibody description

CCHCR1 Rabbit Polyclonal antibody. Positive WB detected in Transfected HEK-293 cells. Positive IF detected in HEK-293 cells. Positive IHC detected in human testis tissue, human skin tissue. Observed molecular weight by Western-blot: 85 kDa



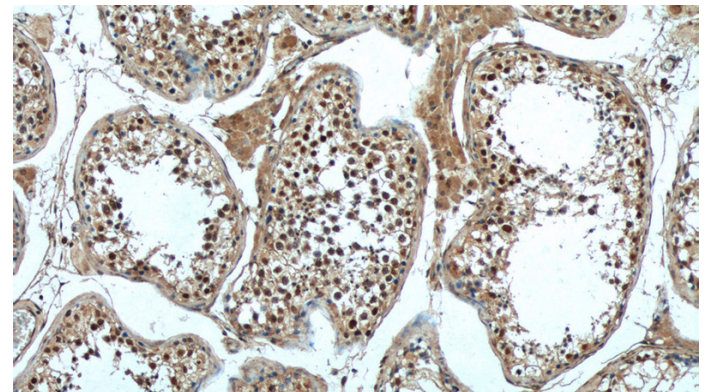
Preparation

This antibody was obtained by immunization of CCHCR1 recombinant protein (Accession Number: XM_011514705). Purification method: Antigen affinity purified.

Transfected HEK-293 cells were subjected to SDS PAGE followed by western blot with Catalog No:108995(CCHCR1 Antibody) at dilution of 1:1000

Formulation

PBS with 0.02% sodium azide and 50% glycerol pH 7.3.



Storage

Store at -20°C. DO NOT ALIQUOT

Immunohistochemistry of paraffin-embedded human testis tissue slide using Catalog No:108995(CCHCR1 Antibody) at dilution of 1:50 (under 10x lens)

Clonality

Polyclonal

Ig Type

Rabbit IgG

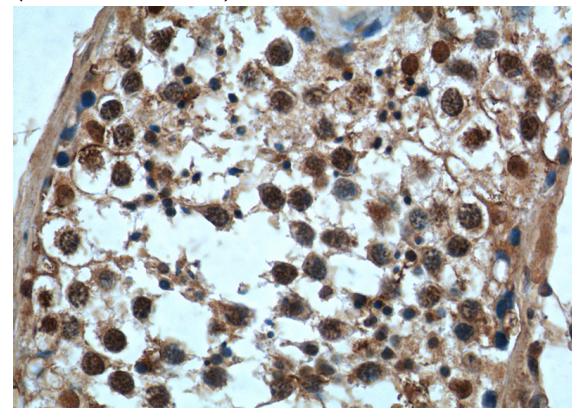
Applications

ELISA, WB, IHC, IF

Dilutions

Recommended Dilution:

WB: 1:500-1:5000

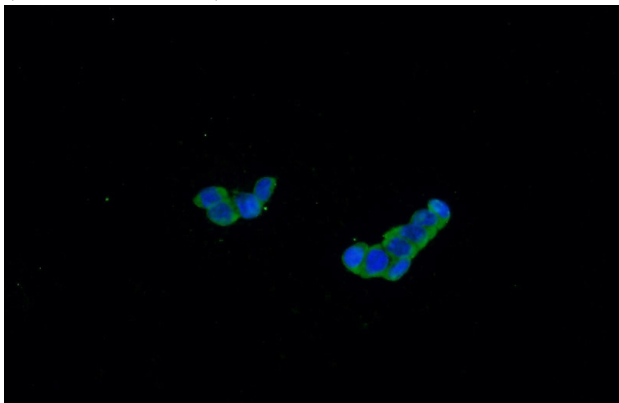


Immunohistochemistry of paraffin-embedded human testis tissue slide using Catalog

CCHCR1 antibody

Catalog Number: 108995

No:108995(CCHCR1 Antibody) at dilution of 1:50
(under 40x lens)



Immunofluorescent analysis of HEK-293 cells
using Catalog No:108995(CCHCR1 Antibody) at
dilution of 1:50 and Alexa Fluor 488-conjugated
AffiniPure Goat Anti-Rabbit IgG(H+L)