

Human Endothelial Cell Adhesion Molecule recombinant protein



Catalog Number: 501995

General Information

Protein Construction

The mature form of human ESAM (NP_620411.2) extracellular domain (Met 1-Ala 248) with five amino acids (DDDDK) at the C-terminus was expressed and purified.

Organism

Human

Expression Host

Human Cells

QC Testing

Purity

> 92 % as determined by SDS-PAGE

Endotoxin

< 1.0 EU per μg of the protein as determined by the LAL method

Stability

Samples are stable for up to twelve months from date of receipt at -70°C

Predicted N terminal

Gln 30

Molecular Mass

The recombinant human ESAM consists of 225 amino acids and predicts a molecular mass of 24.5 kDa. By SDS-PAGE under reducing conditions, the

apparent molecular mass of rh ESAM is approximately 40-45 kDa due to the glycosylation.

Formulation

Lyophilized from sterile 100mM NaCl, 50mM Tris, pH 7.5

1. 5 % trehalose and mannitol are added as protectants before lyophilization.

2. Please contact us for any concerns or special requirements.

Usage Guide

Storage

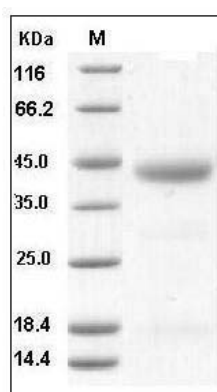
Store it under sterile conditions at -20°C to -80°C .

It is recommended that the protein be aliquoted for optimal storage. Avoid repeated freeze-thaw cycles.

Reconstitution

Adding sterile water, prepare a stock solution of 0.25 mg/ml. Concentration is measured by UV-Vis.

SDS-PAGE



Human ESAM / Endothelial Cell Adhesion Molecule Protein SDS-PAGE