

RNASE13 Polyclonal Antibody



Catalog Number: 160595

Product name

RNASE13 Polyclonal Antibody

Specificity

Human, Mouse, Rat

Antibody description

Polyclonal antibody to RNASE13

Preparation

Antigen: Recombinant fusion protein containing a sequence corresponding to amino acids 1-156 of human RNASE13 (NP_001012264.1).

Formulation

PBS with 0.02% sodium azide, 50% glycerol, pH7.3.

Storage

Store at -20°C. Avoid freeze / thaw cycles.

Clonality

Polyclonal

Ig Type

Rabbit IgG

Applications

WB, IHC, IF

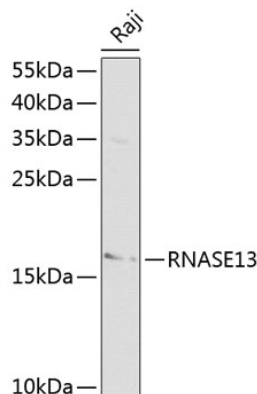
Dilutions

WB 1:500 - 1:2000

IHC 1:100 - 1:200

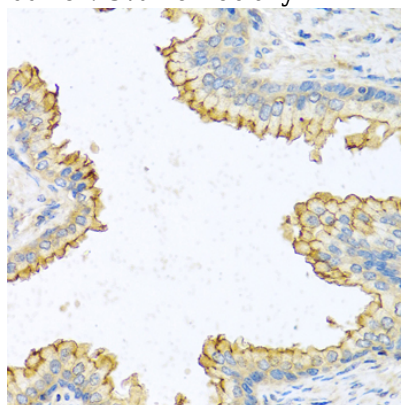
IF 1:10 - 1:100

Validations



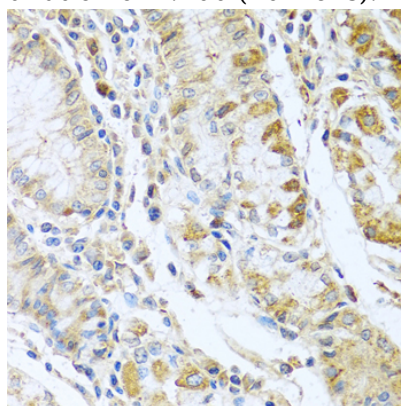
Western blot - RNASE13 Polyclonal Antibody

Western blot analysis of extracts of Raji cells, using RNASE13 antibody at 1:1000 dilution. Secondary antibody: HRP Goat Anti-Rabbit IgG (H+L) at 1:10000 dilution. Lysates/proteins: 25ug per lane. Blocking buffer: 3% nonfat dry milk in TBST.



Immunohistochemistry - RNASE13 Polyclonal Antibody

Immunohistochemistry of paraffin-embedded human prostate using RNASE13 antibody at dilution of 1:100 (40x lens).



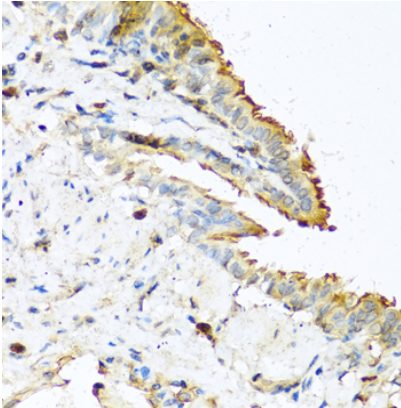
RNASE13 Polyclonal Antibody



Catalog Number: 160595

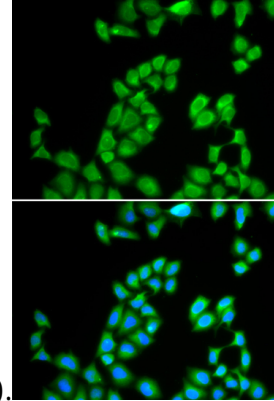
Immunohistochemistry - RNASE13 Polyclonal Antibody

Immunohistochemistry of paraffin-embedded human stomach using RNASE13 antibody at dilution of 1:100 (40x lens).



Immunohistochemistry - RNASE13 Polyclonal Antibody

Immunohistochemistry of paraffin-embedded mouse lung using RNASE13 antibody at dilution of



1:100 (40x lens).

Immunofluorescence - RNASE13 Polyclonal Antibody

Immunofluorescence analysis of MCF-7 cells using RNASE13 antibody . Blue: DAPI for nuclear staining.