

Human REG1A/PSPS/PSPS1/REG (His tag) recombinant protein



Catalog Number: 518195

General Information

Gene Name Synonym

Lithostathine-1-Alpha, Islet Cells Regeneration Factor, ICRF, Islet of Langerhans Regenerating Protein, REG, Pancreatic Stone Protein, PSP, Pancreatic Thread Protein, PTP, Regenerating Islet-Derived Protein 1-Alpha, REG-1-Alpha, Regenerating Protein I Alpha, REG1A, PSPS, PSPS1, REG

Protein Construction

A DNA sequence encoding the Human REG1A/PSPS/PSPS1/REG Gln23-Asn166 is expressed with a 6His tag at the C-terminus.

Organism

Human

Expression Host

Human Cells

QC Testing

Purity

>95% as determined by SDS-PAGE.

Endotoxin

<1.0 EU per μg protein as determined by the LAL method.

Stability

Store for up to 12 months at -20°C to -80°C as lyophilized powder. Aliquots of reconstituted

samples are stable at $< -20^{\circ}\text{C}$ for 3 months.

Formulation

Lyophilized from a $0.2\ \mu\text{m}$ filtered solution of 20mM PB, 150mM NaCl, pH 7.2.

Usage Guide

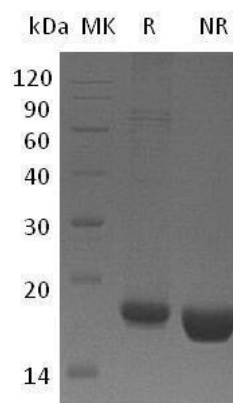
Storage

Lyophilized protein should be stored at $< -20^{\circ}\text{C}$, though stable at room temperature for 3 weeks. Reconstituted protein solution can be stored at $4-7^{\circ}\text{C}$ for 2-7 days.

Reconstitution

Always centrifuge tubes before opening. Do not mix by vortex or pipetting. It is not recommended to reconstitute to a concentration less than $100\ \mu\text{g}/\text{ml}$. Dissolve the lyophilized protein in ddH₂O. Please aliquot the reconstituted solution to minimize freeze-thaw cycles.

SDS-PAGE



Human REG1A/PSPS/PSPS1/REG (His tag)
recombinant protein