

SERP1 antibody

Catalog Number: 115195

Product name

SERP1 antibody

Specificity

human, mouse, rat; other species not tested.

Antibody description

SERP1 Rabbit Polyclonal antibody. Positive IHC detected in human endometrial cancer. Positive WB detected in mouse brain tissue, HeLa cells, mouse pancreas tissue. Observed molecular weight by Western-blot: 10kd

Preparation

This antibody was obtained by immunization of SERP1 recombinant protein (Accession Number: XM_011512698). Purification method: Antigen affinity purified.

Formulation

PBS with 0.02% sodium azide and 50% glycerol pH 7.3.

Storage

Store at -20°C. DO NOT ALIQUOT

Clonality

Polyclonal

Ig Type

Rabbit IgG

Applications

ELISA, WB, IHC

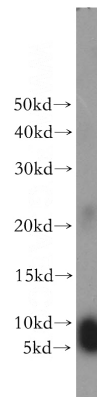
Dilutions

Recommended Dilution:

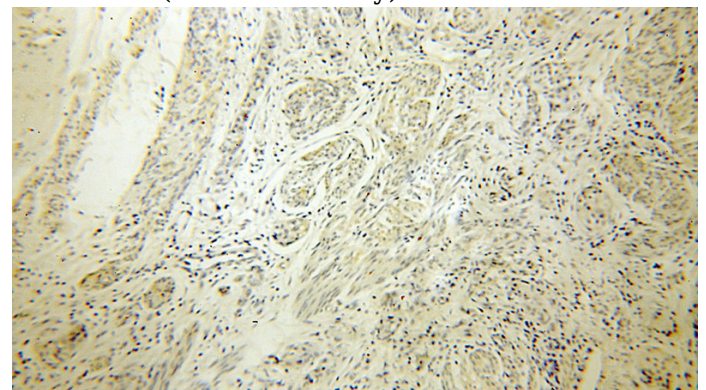
WB: 1:500-1:5000

IHC: 1:20-1:200

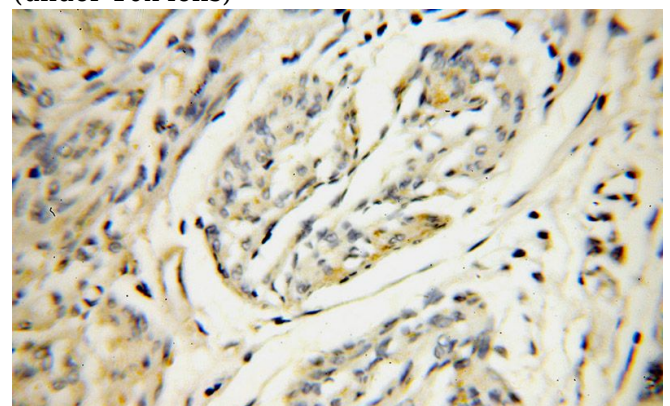
Validations



mouse brain tissue were subjected to SDS PAGE followed by western blot with Catalog No:115195(SERP1 antibody) at dilution of 1:500



Immunohistochemical of paraffin-embedded human endometrial cancer using Catalog No:115195(SERP1 antibody) at dilution of 1:100 (under 10x lens)



Immunohistochemical of paraffin-embedded human endometrial cancer using Catalog No:115195(SERP1 antibody) at dilution of 1:100

SERP1 antibody



Catalog Number: 115195

(under 40x lens)