

# NKCC2 antibody

Catalog Number: 113195

## Product name

NKCC2 antibody

WB: 1:200-1:2000

IP: 1:200-1:2000

## Specificity

Human, Mouse, Rat; other species not tested.

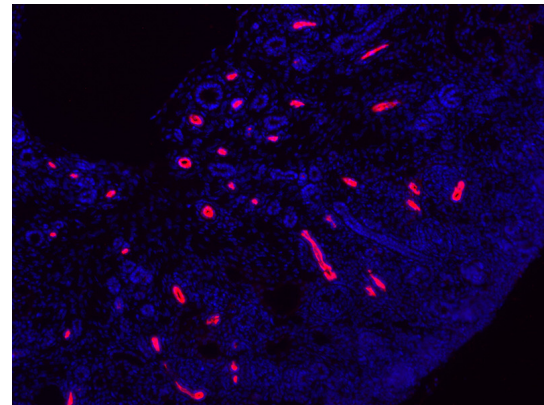
IHC: 1:20-1:200

IF: 1:20-1:200

## Antibody description

NKCC2 Rabbit Polyclonal antibody. Positive IHC detected in human kidney tissue. Positive IF detected in mouse Embryonic kidney tissue. Positive WB detected in HEK-293 cells. Positive IP detected in mouse kidney tissue. Observed molecular weight by Western-blot: 55 kDa, 65-75 kDa

## Validations



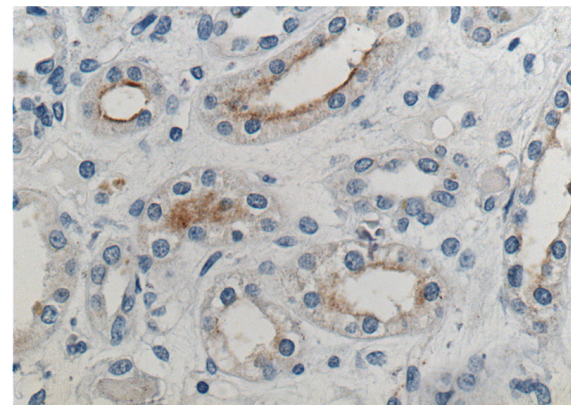
## Preparation

This antibody was obtained by immunization of NKCC2 recombinant protein (Accession Number: BC040138). Purification method: Antigen affinity purified.

IF result of SLC12A1 antibody (Catalog No:113195, 1:900) with mouse Embryonic kidneys from E16.5 (fixed with 4% PFA at 4C for 30 min, cryosections 5% goat serum/PBST was used for blocking and antibody incubation). Red: anti-rabbit Alexa555, Blue: Hoechst.

## Formulation

PBS with 0.1% sodium azide and 50% glycerol pH 7.3.



## Storage

Store at -20°C. DO NOT ALIQUOT

## Clonality

Polyclonal

## Ig Type

Rabbit IgG

## Applications

ELISA, IF, IHC, IP, WB

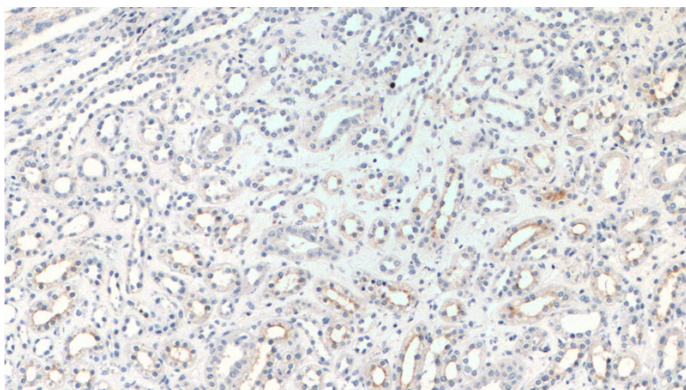
Immunohistochemistry of paraffin-embedded human kidney tissue slide using Catalog No:113195(SLC12A1 Antibody) at dilution of 1:200 (under 40x lens).

## Dilutions

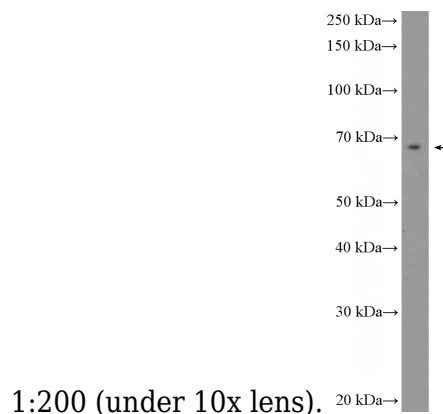
Recommended Dilution:

# NKCC2 antibody

Catalog Number: 113195



Immunohistochemistry of paraffin-embedded human kidney tissue slide using Catalog No:113195(SLC12A1 Antibody) at dilution of



1:200 (under 10x lens).

HEK-293 cells were subjected to SDS PAGE followed by western blot with Catalog No:113195(SLC12A1 Antibody) at dilution of 1:600

IP Result of anti-SLC12A1 (IP:Catalog No:113195, 4ug; Detection:Catalog No:113195 1:500) with mouse kidney tissue lysate 4000ug.