

General Information

Gene Name Synonym

Activated protein C receptor; Centrocyclin;
Centrosomal protein CCD41; Endothelial cell
protein C receptor

Protein Construction

A DNA sequence encoding the mouse PROCR
(Q64695) extracellular domain (Met 1-Ser 214)
was fused with the Fc region of human IgG1 at the
C-terminus.

Organism

Mouse

Expression Host

Human Cells

QC Testing

Purity

> 85 % as determined by SDS-PAGE

Endotoxin

< 1.0 EU per μg of the protein as determined by
the LAL method

Stability

Samples are stable for up to twelve months from
date of receipt at -70°C

Predicted N terminal

Leu 18

Molecular Mass

The secreted recombinant mouse PROCR/Fc is a
disulfide-linked homodimer. The reduced
monomer comprises 438 amino acids and has a
calculated molecular mass of 49.3 kDa. As a result
of glycosylation, the apparent molecular mass of
the recombinant protein is approximately 65-75
kDa in SDS-PAGE under reducing conditions.

Formulation

Lyophilized from sterile PBS, pH 7.4

1. 5 % trehalose and mannitol are added as
protectants before lyophilization.

2. Please contact us for any concerns or special
requirements.

Usage Guide

Storage

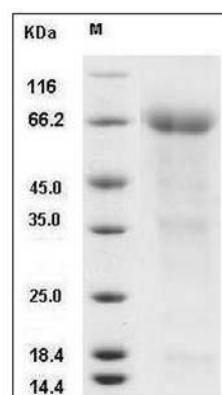
Store it under sterile conditions at -20°C to -80°C .

It is recommended that the protein be aliquoted
for optimal storage. Avoid repeated freeze-thaw
cycles.

Reconstitution

Adding sterile water, prepare a stock solution of
0.25 mg/ml. Concentration is measured by UV-Vis.

SDS-PAGE



Mouse Epcr / PROCR Protein (Fc Tag) SDS-PAGE