

# Human EGFR/HER1/ErbB1 (His Tag) recombinant protein



Catalog Number: 500195

## General Information

### Gene Name Synonym

Proto-oncogene c-ErbB-1; Receptor tyrosine-protein kinase erbB-1

### Protein Construction

A DNA sequence encoding the extracellular domain (Met 1-Lys 642) of human EGFR (NP\_005219) was expressed with a C-terminal polyhistidine tag.

### Organism

Human

### Expression Host

Baculovirus-Insect Cells

## QC Testing

### Activity

Measured by its binding ability in a functional ELISA.  
Immobilized human EGF at 10 µg/ml can bind human EGFR with a linear range of 3.2-400 ng/ml.

### Purity

> 95 % as determined by SDS-PAGE

### Endotoxin

< 1.0 EU per µg of the protein as determined by the LAL method

### Stability

Samples are stable for up to twelve months from date of receipt at -70°C

### Predicted N terminal

Leu 25

## Molecular Mass

The recombinant human EGFR consists of 626 amino acids and has a calculated molecular mass of 69.2 kDa. The recombinant protein migrates as an approximately 75 kDa protein in SDS-PAGE under reducing conditions.

## Formulation

Lyophilized from sterile 20mM Tris, 50mM NaCl, 3mM DTT, 0.5mM TCEP, pH 7.4  
1. 5 % trehalose and mannitol are added as protectants before lyophilization.  
2. Please contact us for any concerns or special requirements.

## Usage Guide

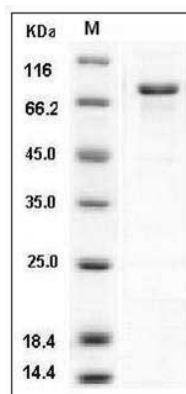
### Storage

Store it under sterile conditions at -20°C to -80°C. It is recommended that the protein be aliquoted for optimal storage. Avoid repeated freeze-thaw cycles.

### Reconstitution

Adding sterile water, prepare a stock solution of 0.25 mg/ml. Concentration is measured by UV-Vis.

## SDS-PAGE



Human EGFR / HER1 / ErbB1 Protein (His Tag)  
SDS-PAGE