

JP45/JSRP1 antibody

Catalog Number: 111895

Product name

JP45/JSRP1 antibody

Specificity

Human; other species not tested.

Antibody description

JP45/JSRP1 Rabbit Polyclonal antibody. Positive IHC detected in human pancreas cancer tissue. Positive WB detected in human skeletal muscle tissue. Observed molecular weight by Western-blot: 30kd

Preparation

This antibody was obtained by immunization of JP45/JSRP1 recombinant protein (Accession Number: NM_144616). Purification method: Antigen affinity purified.

Formulation

PBS with 0.1% sodium azide and 50% glycerol pH 7.3.

Storage

Store at -20°C. DO NOT ALIQUOT

Clonality

Polyclonal

Ig Type

Rabbit IgG

Applications

ELISA, IHC, WB

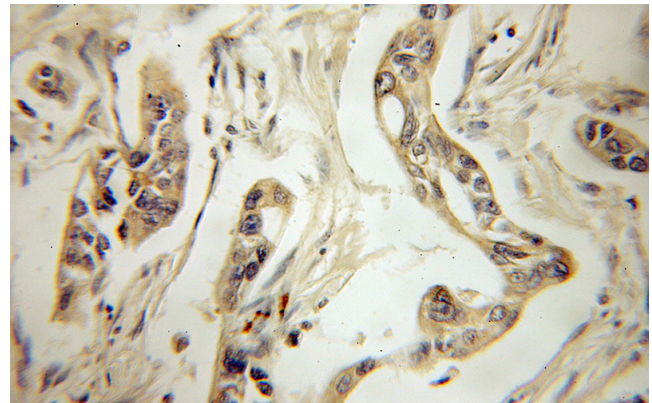
Dilutions

Recommended Dilution:

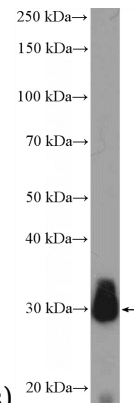
WB: 1:200-1:2000

IHC: 1:20-1:200

Validations



Immunohistochemical of paraffin-embedded human pancreas cancer using Catalog No:111895(JP45; JSRP1 antibody) at dilution of



1:50 (under 10x lens)

human skeletal muscle tissue were subjected to SDS PAGE followed by western blot with Catalog No:111895(JP45; JSRP1 Antibody) at dilution of 1:600