

Human glutaredoxin-1 / GRX1 / GLRX (His Tag) recombinant protein



Catalog Number: 500895

General Information

Gene Name Synonym

Thioltransferase-1

Protein Construction

A DNA sequence encoding the human GLRX (P35754)(Met1-Gln106) was expressed with a polyhistidine tag at the N-terminus.

Organism

Human

Expression Host

E. coli

QC Testing

Purity

> 85 % as determined by SDS-PAGE

Endotoxin

Please contact us for more information.

Stability

Samples are stable for up to twelve months from date of receipt at -70°C

Predicted N terminal

His

Molecular Mass

The recombinant human GLRX consists of 121 amino acids and predicts a molecular mass of 13.6

KDa. It migrates as an approximately 12 KDa band in SDS-PAGE under reducing conditions.

Formulation

Lyophilized from sterile 50mM Tris, 10% Glycerol, 1mM DTT, pH 8.0.

1. 5 % trehalose and mannitol are added as protectants before lyophilization.

2. Please contact us for any concerns or special requirements.

Usage Guide

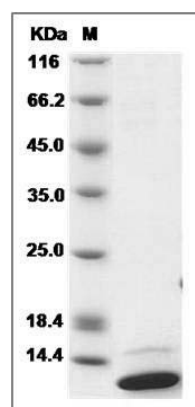
Storage

Store it under sterile conditions at -20°C to -80°C. It is recommended that the protein be aliquoted for optimal storage. Avoid repeated freeze-thaw cycles.

Reconstitution

Adding sterile water, prepare a stock solution of 0.25 mg/ml. Concentration is measured by UV-Vis.

SDS-PAGE



Human Glutaredoxin / GRX1 / GLRX Protein (His Tag) SDS-PAGE