

TUSC2 antibody

Catalog Number: 116495

Product name

TUSC2 antibody

IHC: 1:20-1:200

IF: 1:20-1:200

Specificity

Human, Mouse, Rat; other species not tested.

Antibody description

TUSC2 Rabbit Polyclonal antibody. Positive IHC detected in human lung cancer tissue, human colon cancer tissue. Positive IF detected in A549 cells. Positive WB detected in human heart tissue, mouse pancreas tissue. Observed molecular weight by Western-blot: 10-12kd

Preparation

This antibody was obtained by immunization of TUSC2 recombinant protein (Accession Number: NM_007275). Purification method: Antigen affinity purified.

Formulation

PBS with 0.02% sodium azide and 50% glycerol pH 7.3.

Storage

Store at -20°C. DO NOT ALIQUOT

Clonality

Polyclonal

Ig Type

Rabbit IgG

Applications

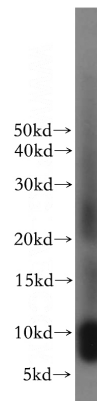
ELISA, WB, IHC, IF

Dilutions

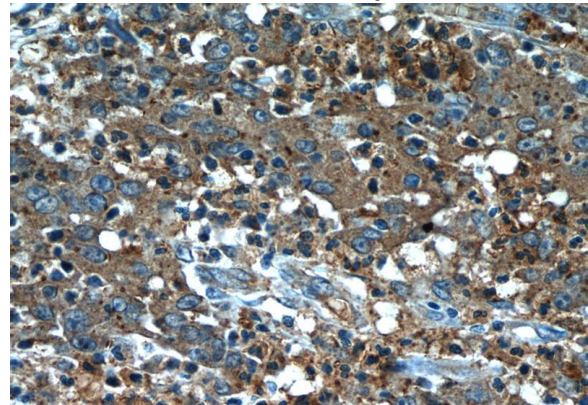
Recommended Dilution:

WB: 1:500-1:5000

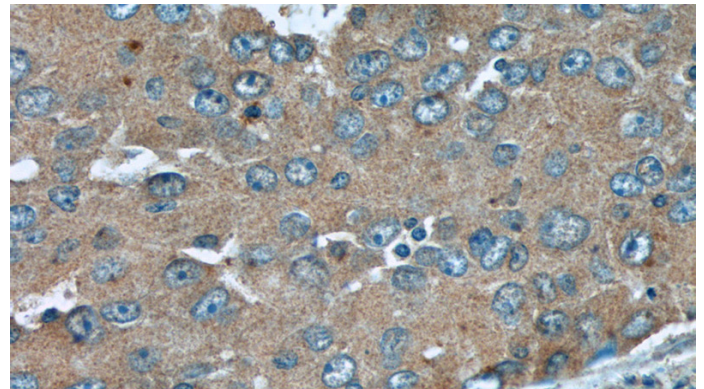
Validations



human heart tissue were subjected to SDS PAGE followed by western blot with Catalog No:116495(TUSC2 antibody) at dilution of 1:300



Immunohistochemistry of paraffin-embedded human colon cancer tissue slide using Catalog No:116495(TUSC2 Antibody) at dilution of 1:50 (under 40x lens)

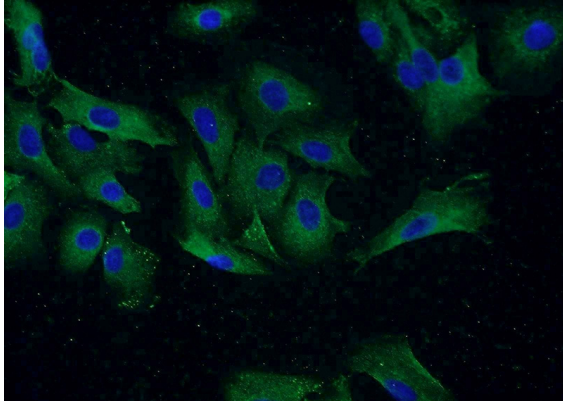


Immunohistochemistry of paraffin-embedded

TUSC2 antibody

Catalog Number: 116495

human lung cancer tissue slide using Catalog No:116495(TUSC2 Antibody) at dilution of 1:50 (under 40x lens)



Immunofluorescent analysis of A549 cells using Catalog No:116495(TUSC2 Antibody) at dilution of 1:50 and Alexa Fluor 488-conjugated AffiniPure Goat Anti-Rabbit IgG(H+L)