

# PPP2CA antibody

Catalog Number: 114095

## Product name

PPP2CA antibody

IP: 1:200-1:2000

IHC: 1:20-1:200

## Specificity

Human, Mouse, Rat; other species not tested.

## Antibody description

PPP2CA Rabbit Polyclonal antibody. Positive IHC detected in human liver cancer tissue. Positive WB detected in human liver tissue, Jurkat cells, MCF7 cells. Positive IP detected in HeLa cells, Jurkat cells. Observed molecular weight by Western-blot: 36 kDa

## Preparation

This antibody was obtained by immunization of PPP2CA recombinant protein (Accession Number: NM\_002715). Purification method: Antigen affinity purified.

## Formulation

PBS with 0.02% sodium azide and 50% glycerol pH 7.3.

## Storage

Store at -20°C. DO NOT ALIQUOT

## Clonality

Polyclonal

## Ig Type

Rabbit IgG

## Applications

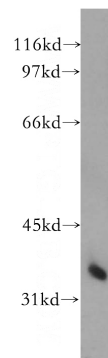
ELISA, WB, IHC, IP

## Dilutions

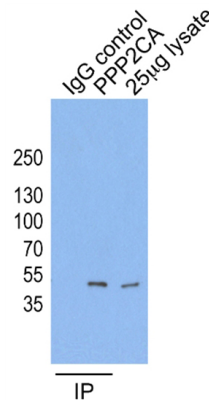
Recommended Dilution:

WB: 1:200-1:2000

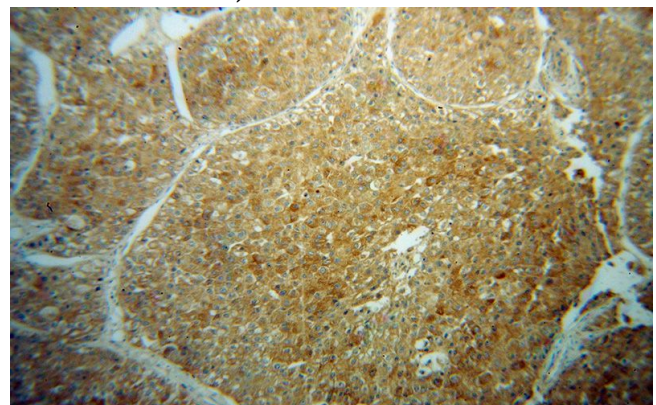
## Validations



human liver tissue were subjected to SDS PAGE followed by western blot with Catalog No:114095(PPP2CA antibody) at dilution of 1:300



IP result of anti-PPP2CA (Catalog No:114095 for IP and Detection) with HeLa cells.



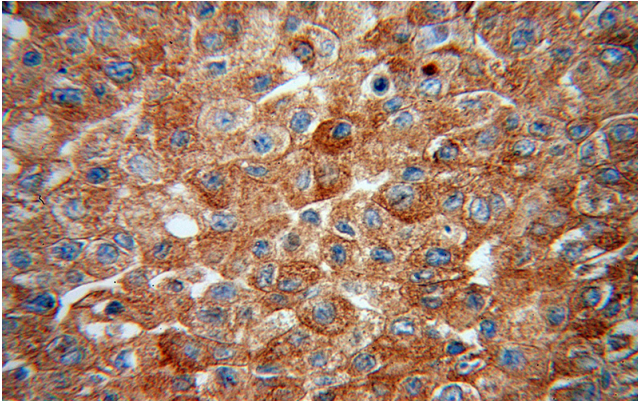
Immunohistochemical of paraffin-embedded human liver cancer using Catalog No:114095(PPP2CA antibody) at dilution of 1:50

# PPP2CA antibody

Catalog Number: 114095

---

(under 10x lens)



Immunohistochemical of paraffin-embedded human liver cancer using Catalog No:114095(PPP2CA antibody) at dilution of 1:50 (under 40x lens)