

# Human EGFR/HER1/ErbB1 (Fc Tag) recombinant protein



Catalog Number: 504095

## General Information

### Gene Name Synonym

Proto-oncogene c-ErbB-1; Receptor tyrosine-protein kinase erbB-1

### Protein Construction

A DNA sequence encoding the extracellular domain (Met 1-Gly 645) of human EGFR (NP\_005219) was fused with the Fc region of human IgG1 at the C-terminus.

### Organism

Human

### Expression Host

Human Cells

## QC Testing

### Activity

Measured by its binding ability in a functional ELISA

. Immobilized recombinant human EGF at 10 µg/ml (100 µl/well) can bind human EGFR with a linear range of 0.64-400 ng/ml.

### Purity

> 97 % as determined by SDS-PAGE

### Endotoxin

< 1.0 EU per µg of the protein as determined by the LAL method

### Stability

Samples are stable for up to twelve months from date of receipt at -70°C

### Predicted N terminal

Leu 25

## Molecular Mass

The recombinant human EGFR/Fc chimera is a homodimeric protein. The reduced monomer consists of 860 amino acids and has a calculated molecular mass of 95 kDa. As a result of glycosylation, the recombinant protein migrates as an approximately 130-140 kDa protein in SDS-PAGE under reducing conditions.

## Formulation

Lyophilized from sterile PBS, pH 7.4

1. 5 % trehalose and mannitol are added as protectants before lyophilization.

2. Please contact us for any concerns or special requirements.

## Usage Guide

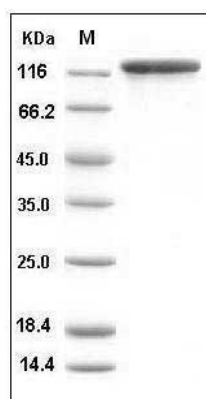
### Storage

Store it under sterile conditions at -20°C to -80°C. It is recommended that the protein be aliquoted for optimal storage. Avoid repeated freeze-thaw cycles.

### Reconstitution

Adding sterile water, prepare a stock solution of 0.25 mg/ml. Concentration is measured by UV-Vis.

### SDS-PAGE



Human EGFR / HER1 / ErbB1 Protein (Fc Tag)  
SDS-PAGE