

KLHL18 antibody

Catalog Number: 112095

Product name

KLHL18 antibody

IHC: 1:20-1:200

IF: 1:10-1:100

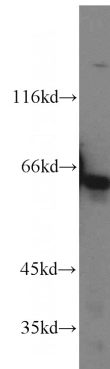
Specificity

human, mouse, rat; other species not tested.

Validations

Antibody description

KLHL18 Rabbit Polyclonal antibody. Positive IHC detected in human colon. Positive IF detected in HeLa. Positive WB detected in HepG2 cells, HEK-293 cells, COLO 320 cells, HeLa cells, HL-60 cells, mouse brain tissue. Observed molecular weight by Western-blot: 63kd,56kd



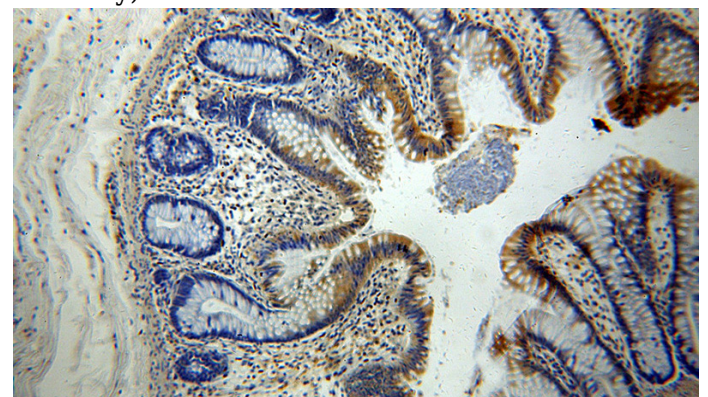
Preparation

This antibody was obtained by immunization of KLHL18 recombinant protein (Accession Number: BC032620). Purification method: Antigen affinity purified.

HepG2 cells were subjected to SDS PAGE followed by western blot with Catalog No:112095(KLHL18 antibody) at dilution of 1:600

Formulation

PBS with 0.02% sodium azide and 50% glycerol pH 7.3.



Storage

Store at -20°C. DO NOT ALIQUOT

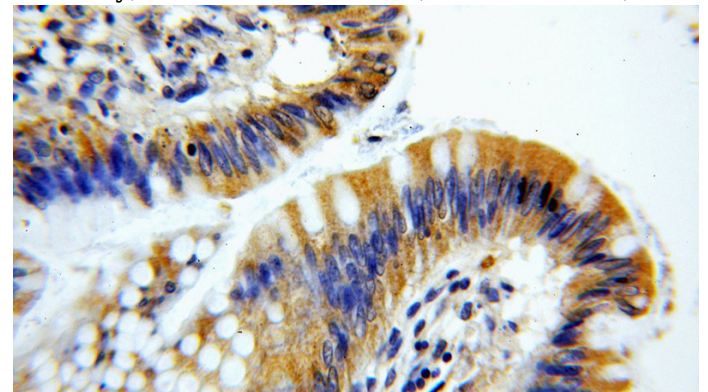
Clonality

Polyclonal

Immunohistochemical of paraffin-embedded human colon using Catalog No:112095(KLHL18 antibody) at dilution of 1:100 (under 10x lens)

Ig Type

Rabbit IgG



Applications

ELISA, WB, IHC, IF

Dilutions

Recommended Dilution:

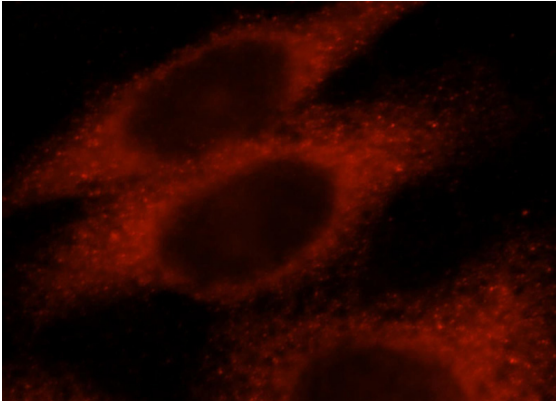
WB: 1:500-1:5000

Immunohistochemical of paraffin-embedded human colon using Catalog No:112095(KLHL18

KLHL18 antibody

Catalog Number: 112095

antibody) at dilution of 1:100 (under 40x lens)



Immunofluorescent analysis of HeLa cells, using KLHL18 antibody Catalog No:112095 at 1:25 dilution and Rhodamine-labeled goat anti-rabbit IgG (red).