

## General Information

### Gene Name Synonym

cDNA FLJ75193, highly similar to Homo sapiens calcium/calmodulin-dependent protein kinase II alpha-B subunit mRNA

### Protein Construction

A DNA sequence encoding the human CAMK2A isoform 2 (NP\_741960.1) (Met 1-His 478) was fused with the GST tag at the N-terminus.

### Organism

Human

### Expression Host

Baculovirus-Insect Cells

## QC Testing

### Activity

The specific activity was determined to be 160 nmol/min/mg using Autocamtide-2 synthetic peptide (KKALRRQETVDAL-amide) as substrate.

### Purity

> 85 % as determined by SDS-PAGE

### Endotoxin

< 1.0 EU per  $\mu\text{g}$  of the protein as determined by the LAL method

### Stability

Samples are stable for up to twelve months from date of receipt at  $-70^{\circ}\text{C}$

### Predicted N terminal

Met

### Molecular Mass

The recombinant human CAMK2A/GST chimera consists of 703 amino acids and predicts a molecular mass of 80.3 kDa. It migrates as an approximately 80 kDa band in SDS-PAGE under reducing conditions.

### Formulation

Supplied as sterile 50mM Tris, 100mM NaCl, 0.5mM PMSF, 0.5mM Reduced Glutathione, pH 8.0

1. 5 % trehalose and mannitol are added as protectants before lyophilization.

2. Please contact us for any concerns or special requirements.

## Usage Guide

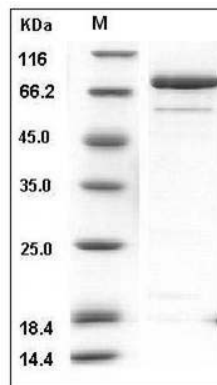
### Storage

Store it under sterile conditions at  $-20^{\circ}\text{C}$  to  $-80^{\circ}\text{C}$ . It is recommended that the protein be aliquoted for optimal storage. Avoid repeated freeze-thaw cycles.

### Reconstitution

Adding sterile water, prepare a stock solution of 0.25 mg/ml. Concentration is measured by UV-Vis.

### SDS-PAGE



Human CAMK2A / CAMKA Protein (GST Tag) SDS-PAGE