

Anti-Methylmalonyl Coenzyme A mutase Rabbit antibody



Catalog Number: 168785

Product name

Anti-Methylmalonyl Coenzyme A mutase Rabbit antibody

Specificity

Human, Mouse, Rat

Antibody description

Methylmalonyl Coenzyme A mutase Rabbit monoclonal antibody

Preparation

Antigen: A synthetic peptide of human Methylmalonyl Coenzyme A mutase

Formulation

50nM Tris-Glycine(pH 7.4), 0.15M NaCl, 40%Glycerol, 0.01% sodium azide and 0.05% BSA.

Storage

Store at 4°C short term. Store at -20°C long term. Avoid freeze / thaw cycle.

Clonality

Monoclonal

Ig Type

Rabbit IgG

Applications

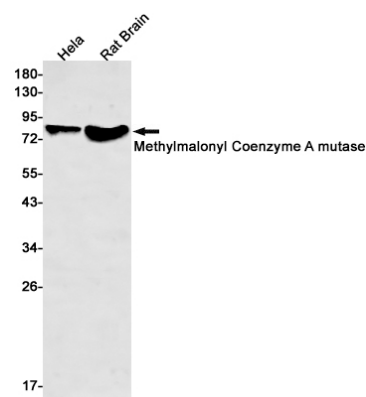
WB, IHC-P

Dilutions

WB: 1/1000

IHC: 1/20

Validations



Western blot detection of Methylmalonyl Coenzyme A mutase in HeLa,Rat Brain lysates using Methylmalonyl Coenzyme A mutase Rabbit mAb(1:500 diluted).Predicted band size:83kDa.Observed band size:83kDa.