

Adenylosuccinate lyase antibody



Catalog Number: 107785

Product name

Adenylosuccinate lyase antibody

IHC: 1:20-1:200

IF: 1:10-1:100

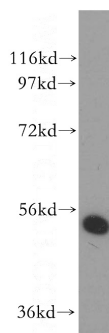
Specificity

Human, Mouse, Rat; other species not tested.

Antibody description

Adenylosuccinate lyase Rabbit Polyclonal antibody. Positive IF detected in HeLa cells. Positive IHC detected in human liver cancer tissue. Positive FC detected in HeLa cells. Positive WB detected in HeLa cells, HepG2 cells. Observed molecular weight by Western-blot: 55 kDa

Validations



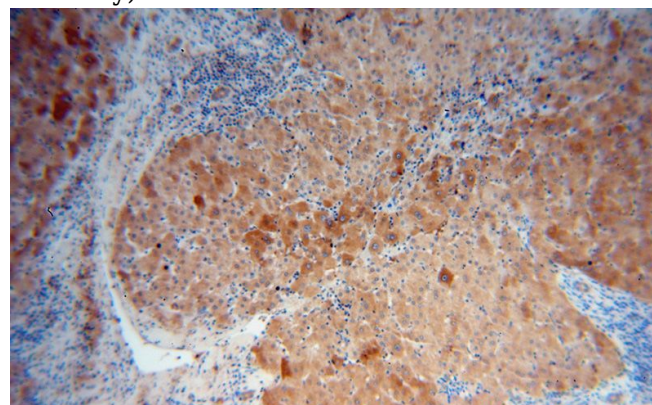
Preparation

This antibody was obtained by immunization of Adenylosuccinate lyase recombinant protein (Accession Number: NM_000026). Purification method: Antigen affinity purified.

HeLa cells were subjected to SDS PAGE followed by western blot with Catalog No:107785(ADSL antibody) at dilution of 1:400

Formulation

PBS with 0.02% sodium azide and 50% glycerol pH 7.3.



Storage

Store at -20°C. DO NOT ALIQUOT

Clonality

Polyclonal

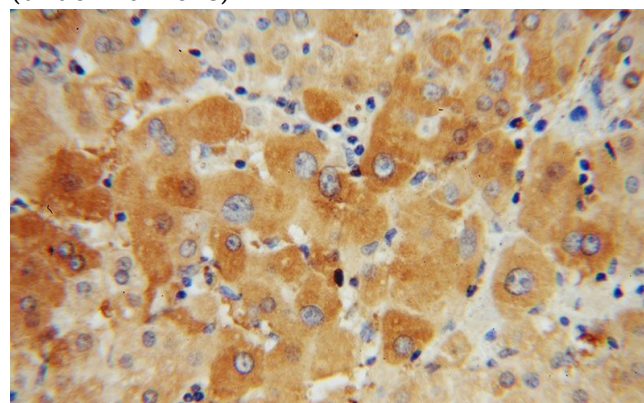
Immunohistochemical of paraffin-embedded human liver cancer using Catalog No:107785(ADSL antibody) at dilution of 1:50 (under 10x lens)

Ig Type

Rabbit IgG

Applications

ELISA, WB, IHC, IF, FC



Dilutions

Recommended Dilution:

WB: 1:500-1:5000

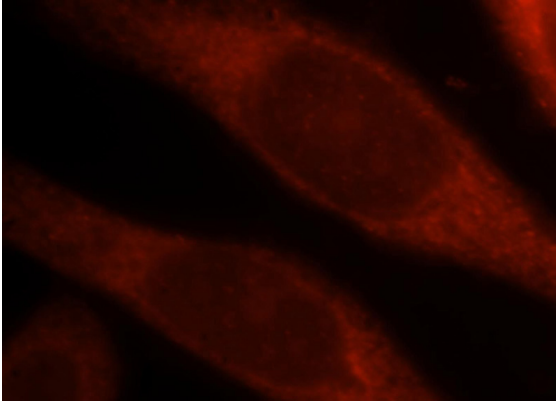
Immunohistochemical of paraffin-embedded

Adenylosuccinate lyase antibody

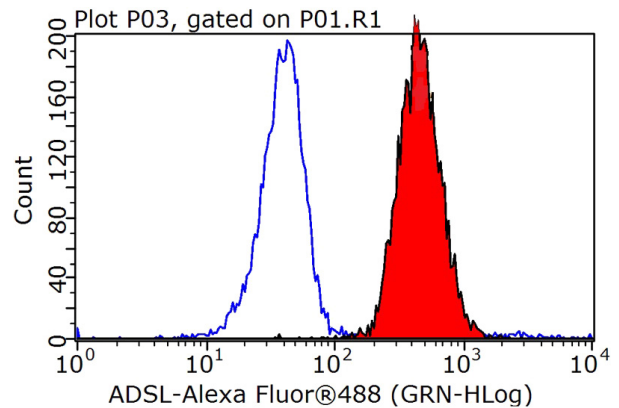


Catalog Number: 107785

human liver cancer using Catalog
No:107785(ADSL antibody) at dilution of 1:50
(under 40x lens)



Immunofluorescent analysis of HeLa cells, using
ADSL antibody Catalog No:107785 at 1:25 dilution
and Rhodamine-labeled goat anti-rabbit IgG (red).



1X10⁶ HeLa cells were stained with 0.2ug ADSL antibody (Catalog No:107785, red) and control antibody (blue). Fixed with 90% MeOH blocked with 3% BSA (30 min). Alexa Fluor 488-conjugated AffiniPure Goat Anti-Rabbit IgG(H+L) with dilution 1:1000.