

Anti-PPP2R5E Rabbit antibody



Catalog Number: 167785

Product name

Anti-PPP2R5E Rabbit antibody

Specificity

Human, Mouse, Rat

Antibody description

PPP2R5E Rabbit monoclonal antibody

Preparation

Antigen: A synthetic peptide of human PPP2R5E

Formulation

50nM Tris-Glycine(pH 7.4), 0.15M NaCl,
40%Glycerol, 0.01% sodium azide and 0.05% BSA

Storage

Store at 4°C short term. Store at -20°C long term.
Avoid freeze / thaw cycle.

Clonality

Monoclonal

Ig Type

Rabbit IgG

Applications

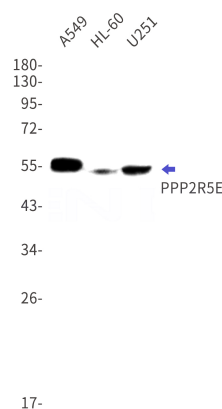
WB, ICC/IF

Dilutions

WB: 1/1000

ICC/IF: 1/100

Validations



Western blot detection of PPP2R5E in A549,HL-60,U251 cell lysates using PPP2R5E Rabbit mAb(1:1000 diluted).Predicted band size:55kDa.Observed band size:55kDa.