

Phospho-STAT2-Y690 pAb



Catalog Number: 166385

Product name

Phospho-STAT2-Y690 pAb

Specificity

Human

Antibody description

Polyclonal antibody to Phospho-STAT2-Y690

Preparation

Antigen: A synthetic phosphorylated peptide around Y690 of human STAT2 (NP_005410.1).

Formulation

PBS with 0.02% sodium azide, 50% glycerol, pH7.3.

Storage

Store at -20°C. Avoid freeze / thaw cycles.

Clonality

Polyclonal

Ig Type

Rabbit IgG

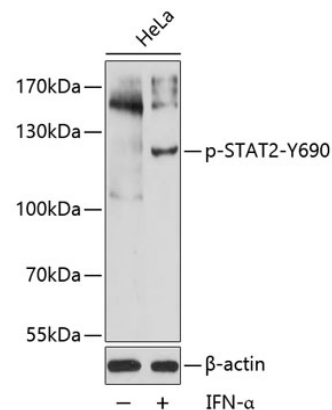
Applications

WB

Dilutions

WB 1:500 - 1:1000

Validations



Western blot - Phospho-STAT2-Y690 pAb

Western blot analysis of extracts of HeLa cells, using Phospho-STAT2-Y690 antibody at 1:2000 dilution. HeLa cells were treated by IFN-u03b1 (100ng/ml) for 30 minutes after serum-starvation overnight. Secondary antibody: HRP Goat Anti-Rabbit IgG (H+L) at 1:10000 dilution. Lysates/proteins: 25ug per lane. Blocking buffer: 3% BSA. Detection: ECL Basic Kit. Exposure time: 1s.