

# STAT2 antibody

Catalog Number: 115685

## Product name

STAT2 antibody

IP: 1:200-1:2000

IHC: 1:20-1:200

## Specificity

Human, Mouse, Rat; other species not tested.

## Antibody description

STAT2 Rabbit Polyclonal antibody. Positive IP detected in HeLa cells. Positive WB detected in HeLa cells, HT-1080 cells, K-562 cells. Positive IHC detected in human breast cancer tissue, human lung cancer tissue. Observed molecular weight by Western-blot: 113 kDa

## Preparation

This antibody was obtained by immunization of STAT2 recombinant protein (Accession Number: NM\_005419). Purification method: Antigen affinity purified.

## Formulation

PBS with 0.02% sodium azide and 50% glycerol pH 7.3.

## Storage

Store at -20°C. DO NOT ALIQUOT

## Clonality

Polyclonal

## Ig Type

Rabbit IgG

## Applications

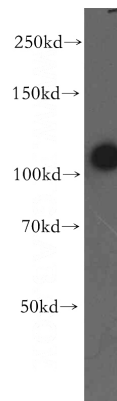
ELISA, WB, IHC, IP

## Dilutions

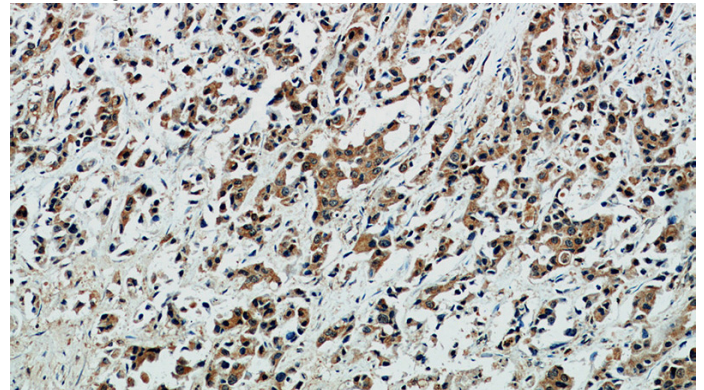
Recommended Dilution:

WB: 1:500-1:5000

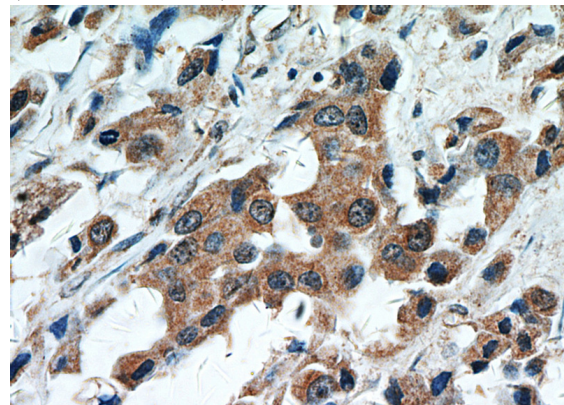
## Validations



HeLa cells were subjected to SDS PAGE followed by western blot with Catalog No:115685(STAT2 antibody) at dilution of 1:500



Immunohistochemical of paraffin-embedded human breast cancer using Catalog No:115685(STAT2 antibody) at dilution of 1:50 (under 10x lens)



Immunohistochemical of paraffin-embedded

# STAT2 antibody

Catalog Number: 115685

human breast cancer using Catalog No:115685(STAT2 antibody) at dilution of 1:50 (under 40x lens)

IP Result of anti-STAT2 (IP:Catalog No:115685, 4ug; Detection:Catalog No:115685 1:500) with HeLa cells lysate 2800ug.

