

Anti-C1D antibody



Catalog Number: 104685

Product name

Anti-C1D antibody

Immunogen

[Human C1D \(GST Tag\) recombinant protein](#)

Specificity

Human C1D

Antibody description

Rabbit monoclonal to C1D

Preparation

This antibody was obtained from a rabbit immunized with purified, recombinant Human C1D (rh C1D; Q13901; Met1-Ser141).

Formulation

0.2 μ m filtered solution in PBS with 5% trehalose

Storage

This antibody can be stored at 2°C-8°C for one month without detectable loss of activity. Antibody products are stable for twelve months from date of receipt when stored at -20°C to -80°C.

Preservative-Free.

Sodium azide is recommended to avoid

contamination (final concentration 0.05%-0.1%). It is toxic to cells and should be disposed of properly. Avoid repeated freeze-thaw cycles.

Clonality

Monoclonal

Ig Type

Rabbit IgG

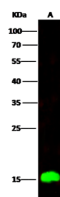
Applications

WB

Dilutions

WB: 1-5 μ g/mL

Validations



Items	Lanes	A
Sample (whole cell lysate)		Bela
Sample Volume (μ g/lane)		30
Gel		13% SDS-PAGE reducing gel
Recommended Concentration		1-5 μ g/ml
Secondary Antibody		Dylight 800-labeled Antibody To Rabbit IgG (H+L), at 1:5000 dilution.

C1D Antibody, Rabbit MAb, Western blot