

NSD3 antibody



Catalog Number: 113285

Product name

NSD3 antibody

Specificity

Human, Mouse, Rat; other species not tested.

Antibody description

NSD3 Rabbit Polyclonal antibody. Positive WB detected in HeLa cells, HEK-293 cells. Positive IHC detected in human lymphoma tissue. Observed molecular weight by Western-blot: 160-170kd, 68-72kd

Preparation

This antibody was obtained by immunization of NSD3 recombinant protein (Accession Number: NM_017778). Purification method: Antigen affinity purified.

Formulation

PBS with 0.1% sodium azide and 50% glycerol pH 7.3.

Storage

Store at -20°C. DO NOT ALIQUOT

Clonality

Polyclonal

Ig Type

Rabbit IgG

Applications

ELISA, IHC, WB

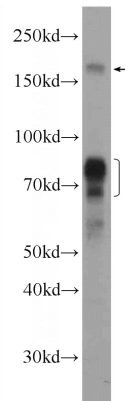
Dilutions

Recommended Dilution:

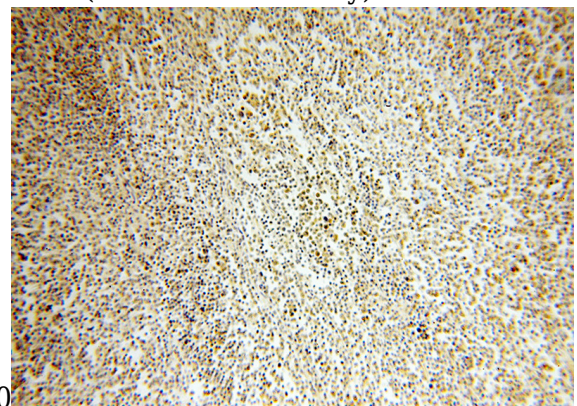
WB: 1:200-1:2000

IHC: 1:20-1:200

Validations

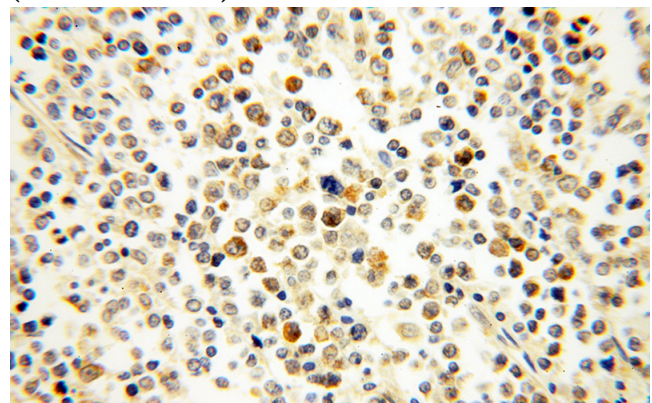


HeLa cells were subjected to SDS PAGE followed by western blot with Catalog No:113285(WHSC1L1 Antibody) at dilution of



1:600

Immunohistochemical of paraffin-embedded human lymphoma using Catalog No:113285(WHSC1L1 antibody) at dilution of 1:50 (under 10x lens)



Immunohistochemical of paraffin-embedded human lymphoma using Catalog

NSD3 antibody



Catalog Number: 113285

No:113285(WHSC1L1 antibody) at dilution of 1:50 (under 40x lens)