

# LMOD3 antibody

Catalog Number: 112285

## Product name

LMOD3 antibody

WB: 1:500-1:5000

IP: 1:200-1:2000

## Specificity

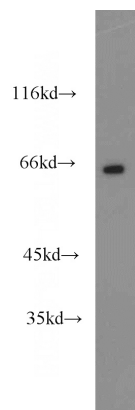
Human, Mouse, Rat; other species not tested.

IHC: 1:20-1:200

## Antibody description

LMOD3 Rabbit Polyclonal antibody. Positive IHC detected in human heart tissue, human skeletal muscle tissue. Positive IP detected in mouse skeletal muscle tissue. Positive WB detected in human heart tissue, mouse heart tissue, rat skeletal muscle tissue. Observed molecular weight by Western-blot: 65-70 kDa

## Validations



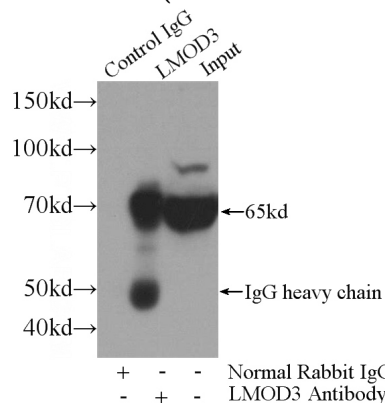
## Preparation

This antibody was obtained by immunization of LMOD3 recombinant protein (Accession Number: BC039202). Purification method: Antigen affinity purified.

human heart tissue were subjected to SDS PAGE followed by western blot with Catalog No:112285(LMOD3 antibody) at dilution of 1:1500

## Formulation

PBS with 0.02% sodium azide and 50% glycerol pH 7.3.



## Storage

Store at -20°C. DO NOT ALIQUOT

## Clonality

Polyclonal

## Ig Type

Rabbit IgG

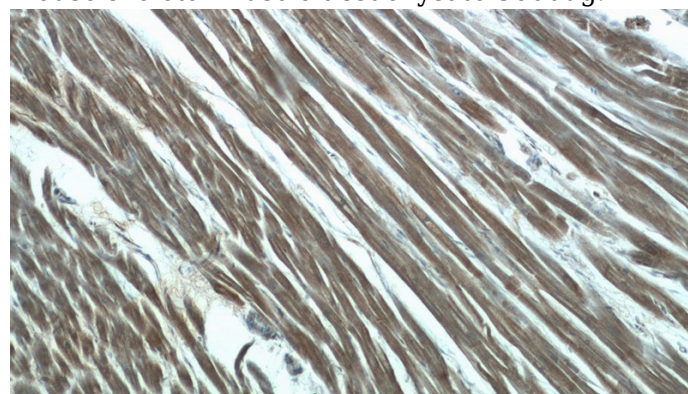
## Applications

ELISA, WB, IHC, IP

## Dilutions

Recommended Dilution:

IP Result of anti-LMOD3 (IP:Catalog No:112285, 4ug; Detection:Catalog No:112285 1:700) with mouse skeletal muscle tissue lysate 3600ug.

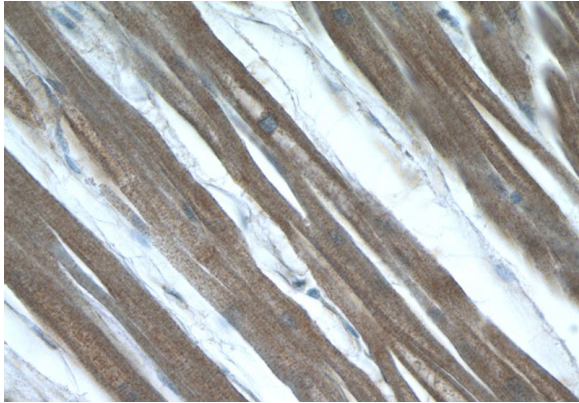


# LMOD3 antibody

Catalog Number: 112285

---

Immunohistochemistry of paraffin-embedded human heart tissue slide using Catalog No:112285(LMOD3 Antibody) at dilution of 1:50 (under 10x lens)



Immunohistochemistry of paraffin-embedded human heart tissue slide using Catalog No:112285(LMOD3 Antibody) at dilution of 1:50 (under 40x lens)