

# Anti-COPS8 Rabbit antibody



Catalog Number: 168585

## Product name

Anti-COPS8 Rabbit antibody

## Specificity

Human, Mouse, Rat

## Antibody description

COPS8 Rabbit monoclonal antibody

## Preparation

Antigen: A synthetic peptide of human COPS8

## Formulation

Supplied in 50nM Tris-Glycine(pH 7.4), 0.15M NaCl, 40%Glycerol, 0.01% sodium azide and 0.05% BSA.

## Storage

Store at 4°C short term. Aliquot and store at -20°C long term. Avoid freeze / thaw cycle.

## Clonality

Monoclonal

## Ig Type

Rabbit IgG

## Applications

WB, IHC-P, ICC/IF, IP

## Dilutions

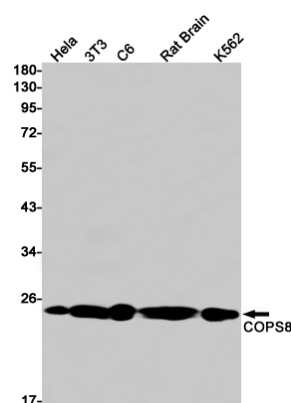
1:1000-1:5000

1:20-1:100

1:20-1:50

1:20-1:50

## Validations



Western blot detection of COPS8 in HeLa, 3T3, C6, Rat Brain, K562 cell lysates using COPS8 Rabbit mAb(1:1000 diluted). Predicted band size: 23kDa. Observed band size: 23kDa.