

# RB1CC1 antibody



Catalog Number: 114585

## Product name

RB1CC1 antibody

IHC: 1:20-1:200

IF: 1:10-1:100

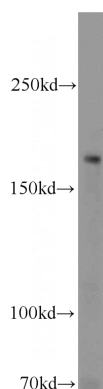
## Specificity

Human, Mouse, Rat; other species not tested.

## Validations

## Antibody description

RB1CC1 Rabbit Polyclonal antibody. Positive IF detected in Hela cells. Positive IHC detected in human breast cancer tissue, human testis tissue. Positive WB detected in HeLa cells, Jurkat cells, MCF7 cells, mouse brain tissue. Observed molecular weight by Western-blot: 180-200 kDa



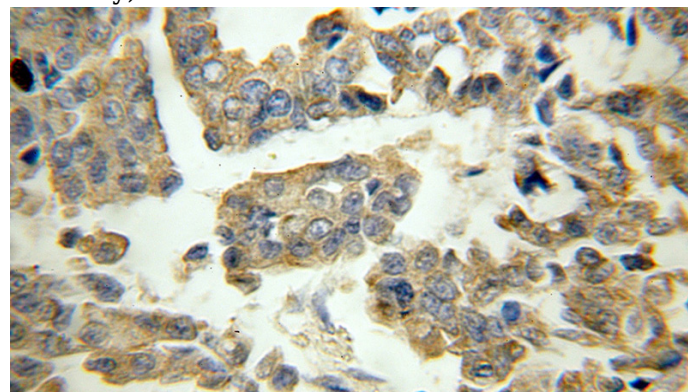
## Preparation

This antibody was obtained by immunization of Recombinant Protein (Accession Number: XM\_011517643). Purification method: Antigen affinity purified.

HeLa cells were subjected to SDS PAGE followed by western blot with Catalog No:114585(RB1CC1 antibody) at dilution of 1:1000

## Formulation

PBS with 0.1% sodium azide and 50% glycerol pH 7.3.



## Storage

Store at -20°C. DO NOT ALIQUOT

## Clonality

Polyclonal

Immunohistochemical of paraffin-embedded human breast cancer using Catalog No:114585(RB1CC1 antibody) at dilution of 1:200 (under 40x lens)

## Ig Type

Rabbit IgG

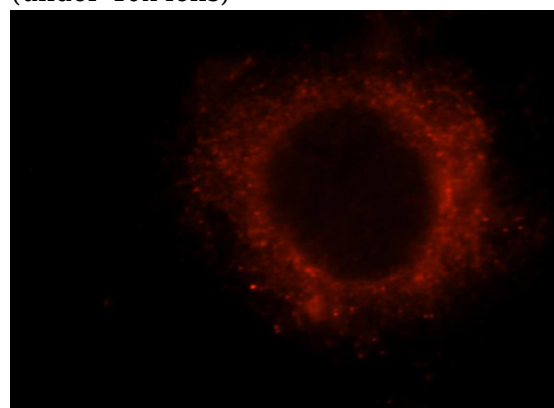
## Applications

ELISA, WB, IHC, IF

## Dilutions

Recommended Dilution:

WB: 1:500-1:5000



Immunofluorescent analysis of Hela cells, using

# RB1CC1 antibody



Catalog Number: 114585

---

RB1CC1 antibody Catalog No:114585 at 1:25

dilution and Rhodamine-labeled goat anti-rabbit  
IgG (red).