

Human CSF1R/MCSF Receptor/CD115 (His & Fc Tag) recombinant protein



Catalog Number: 504185

General Information

Gene Name Synonym

CSF-1 receptor; Proto-oncogene c-Fms

Protein Construction

A DNA sequence encoding the extracellular domain (Met 1-Glu512) of human M-CSFR (NP_005202.2) precursor was expressed with the fused C-terminal polyhistidine-tagged Fc region of human IgG1 at the C-terminus.

Organism

Human

Expression Host

Human Cells

QC Testing

Activity

1. Measured by its ability to bind biotinylated Human CSF1-his in functional ELISA.
2. Measured by its ability to inhibit the human CSF-induced proliferation of M-NFS-60 mouse myelogenous leukemia lymphoblast cells. The ED₅₀ for this effect is typically 0.1-0.6 µg/mL in the presence of 3 ng/ml Recombinant Human M-CSF.

Purity

> 95 % as determined by SDS-PAGE

Endotoxin

< 1.0 EU per µg of the protein as determined by the LAL method

Stability

Samples are stable for up to twelve months from date of receipt at -70°C

Predicted N terminal

Ile 20

Molecular Mass

The recombinant human M-CSFR/Fc chimera is a disulfide-linked homodimer protein. The monomeric subunit contains 737 amino acids after the removal of signal peptide with a calculated molecular mass of 82.4 kDa. As a result of glycosylation, the monomer migrates as an approximately 115-125 kDa protein in SDS-PAGE under reducing conditions.

Formulation

Lyophilized from sterile PBS, pH 7.4

1. 5 % trehalose and mannitol are added as protectants before lyophilization.
2. Please contact us for any concerns or special requirements.

Usage Guide

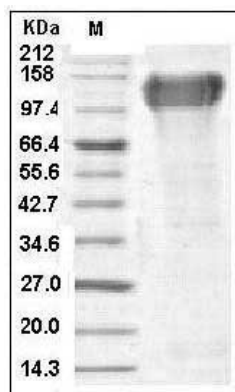
Storage

Store it under sterile conditions at -20°C to -80°C. It is recommended that the protein be aliquoted for optimal storage. Avoid repeated freeze-thaw cycles.

Reconstitution

Adding sterile water, prepare a stock solution of 0.25 mg/ml. Concentration is measured by UV-Vis.

SDS-PAGE



Human CSF1R/MCSF Receptor/CD115 (His & Fc Tag) recombinant protein



Catalog Number: 504185

Human CSF1R / MCSF Receptor / CD115 Protein (His & Fc Tag) SDS-PAGE