

Human SIGLEC6 / CD327 (Fc Tag) recombinant protein



Catalog Number: 500185

General Information

Gene Name Synonym

CD33 antigen-like 1; CDw327; Obesity-binding protein 1

Protein Construction

A DNA sequence encoding the human SIGLEC6 (O43699-3) (Gln27-Val331) was expressed with the Fc region of human IgG1 at the C-terminus.

Organism

Human

Expression Host

Human Cells

QC Testing

Purity

> 90 % as determined by SDS-PAGE

Endotoxin

< 1.0 EU per μg of the protein as determined by the LAL method

Stability

Samples are stable for up to twelve months from date of receipt at -70°C

Predicted N terminal

Gln 27

Molecular Mass

The recombinant human SIGLEC6/Fc is a disulfide-linked homodimer. The reduced

monomer comprises 546 amino acids and has a predicted molecular mass of 60.7 kDa. The apparent molecular mass of the protein is approximately 66-73 kDa in SDS-PAGE under reducing conditions.

Formulation

Lyophilized from sterile PBS, pH 7.4.

1. 5 % trehalose and mannitol are added as protectants before lyophilization.
2. Please contact us for any concerns or special requirements.

Usage Guide

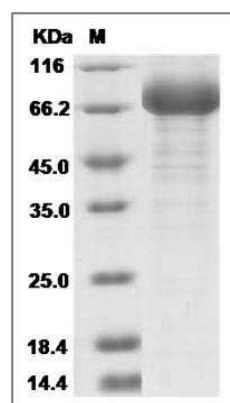
Storage

Store it under sterile conditions at -20°C to -80°C . It is recommended that the protein be aliquoted for optimal storage. Avoid repeated freeze-thaw cycles.

Reconstitution

Adding sterile water, prepare a stock solution of 0.25 mg/ml. Concentration is measured by UV-Vis.

SDS-PAGE



Human SIGLEC6 / CD327 Protein (Fc Tag) SDS-PAGE