

Anti-OTX2/CPHD6 antibody



Catalog Number: 100185

Product name

Anti-OTX2/CPHD6 antibody

Specificity

Human OTX2 / CPHD6

Antibody description

Rabbit polyclonal to OTX2/CPHD6

Preparation

Produced in rabbits immunized with a synthetic peptide corresponding to the center region of the Human OTX2 / CPHD6, and purified by antigen affinity chromatography.

Formulation

0.2 µm filtered solution in PBS

Storage

This antibody can be stored at 2°C-8°C for one month without detectable loss of activity. Antibody products are stable for twelve months from date of receipt when stored at -20°C to -80°C.

Preservative-Free.

Sodium azide is recommended to avoid contamination (final concentration 0.05%-0.1%). It is toxic to cells and should be disposed of

properly. Avoid repeated freeze-thaw cycles.

Clonality

Polyclonal

Ig Type

Rabbit IgG

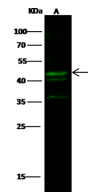
Applications

WB

Dilutions

WB: 10-20 µg/ml

Validations



Lanes	A
Items	
Sample (whole cell lysate)	Jurkat
Sample Volume (µg/lane)	30
Gel	13% SDS-PAGE reducing gel
Recommended Concentration	10-20 µg/ml
Secondary Antibody	Dylight 800-labeled Antibody to Rabbit IgG (H+L), at 1:5000 dilution.
	Developed using Odyssey imaging system.
Explanation	Predicted band size : 32 kDa Observed band size : 43 kDa Additional bands at : 40 kDa and 36 kDa (We are unsure as to the identity of these extra bands.)

OTX2 / CPHD6 Antibody, Rabbit PAb, Antigen Affinity Purified, Western blot