

# YIPF4 antibody

Catalog Number: 116885

## Product name

YIPF4 antibody

IHC: 1:20-1:200

IF: 1:10-1:100

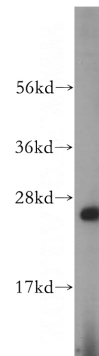
## Specificity

human, mouse, rat; other species not tested.

## Antibody description

YIPF4 Rabbit Polyclonal antibody. Positive IHC detected in human endometrial cancer. Positive IF detected in HepG2. Positive WB detected in Jurkat cells, HeLa cells. Observed molecular weight by Western-blot: 27kd

## Validations



## Preparation

This antibody was obtained by immunization of YIPF4 recombinant protein (Accession Number: NM\_032312). Purification method: Antigen affinity purified.

Jurkat cells were subjected to SDS PAGE followed by western blot with Catalog No:116885(YIPF4 antibody) at dilution of 1:500

## Formulation

PBS with 0.02% sodium azide and 50% glycerol pH 7.3.

## Storage

Store at -20°C. DO NOT ALIQUOT

## Clonality

Polyclonal

## Ig Type

Rabbit IgG

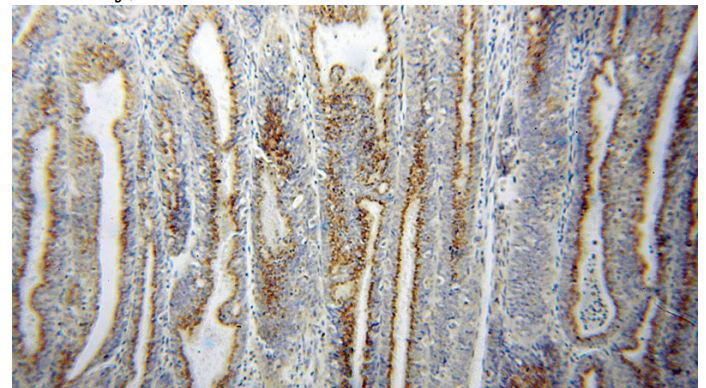
## Applications

ELISA, WB, IHC, IF

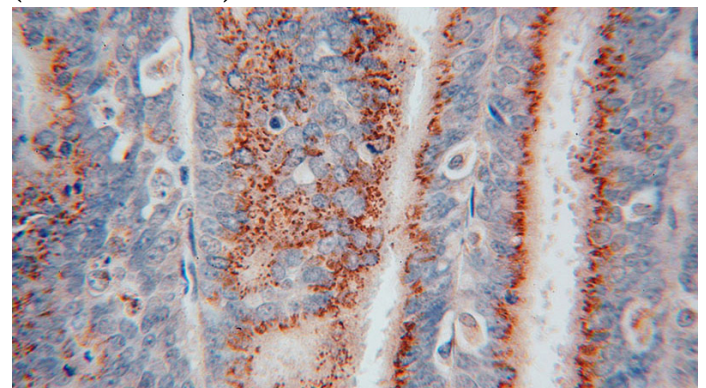
## Dilutions

Recommended Dilution:

WB: 1:500-1:5000



Immunohistochemical of paraffin-embedded human endometrial cancer using Catalog No:116885(YIPF4 antibody) at dilution of 1:50 (under 10x lens)



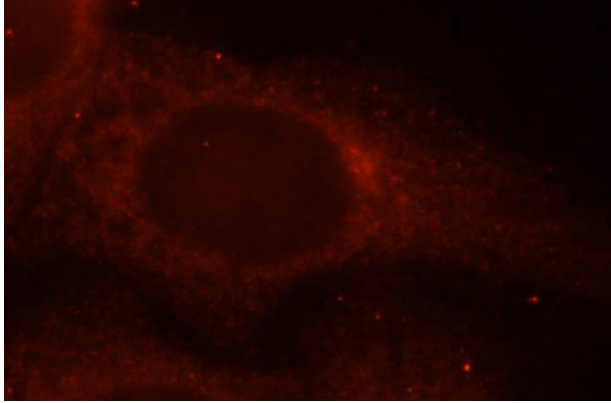
Immunohistochemical of paraffin-embedded

# YIPF4 antibody

Catalog Number: 116885

---

human endometrial cancer using Catalog No:116885(YIPF4 antibody) at dilution of 1:50 (under 40x lens)



Immunofluorescent analysis of HepG2 cells, using YIPF4 antibody Catalog No:116885 at 1:25 dilution and Rhodamine-labeled goat anti-rabbit IgG (red).