

## General Information

### Protein Construction

A DNA sequence encoding the canine EFNB2 (NP\_001107768.1) (Met1-Ala229) was expressed with a C-terminal polyhistidine tag.

### Organism

Canine

### Expression Host

Human Cells

## QC Testing

### Activity

Measured by its binding ability in a functional ELISA.

Immobilized canine EFNB2-His at 10 µg/ml (100 µl /well) can bind human EphB4-Fc(Cat:503223), The EC<sub>50</sub> of human EphB4-Fc(Cat:503223) is 9-20 ng/ml.

### Purity

> 95 % as determined by SDS-PAGE

### Endotoxin

< 1.0 EU per µg of the protein as determined by the LAL method

### Stability

Samples are stable for up to twelve months from date of receipt at -70°C

### Predicted N terminal

Ile 28

### Molecular Mass

The recombinant canine EFNB2 comprises 213 amino acids and has a predicted molecular mass of 23.6 kDa. The apparent molecular mass of the protein is approximately 33-38 kDa in SDS-PAGE under reducing conditions due to glycosylation.

### Formulation

Lyophilized from sterile PBS, pH 7.4.

1. 5 % trehalose and mannitol are added as protectants before lyophilization.

2. Please contact us for any concerns or special requirements.

## Usage Guide

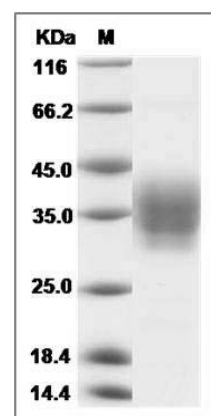
### Storage

Store it under sterile conditions at -20°C to -80°C. It is recommended that the protein be aliquoted for optimal storage. Avoid repeated freeze-thaw cycles.

### Reconstitution

Adding sterile water, prepare a stock solution of 0.25 mg/ml. Concentration is measured by UV-Vis.

### SDS-PAGE



Canine Ephrin-B2 / EFNB2 Protein (His Tag) SDS-PAGE