

# MTX2 antibody

Catalog Number: 112885

## Product name

MTX2 antibody

WB: 1:200-1:2000

IP: 1:200-1:1000

## Specificity

Human, Mouse, Rat; other species not tested.

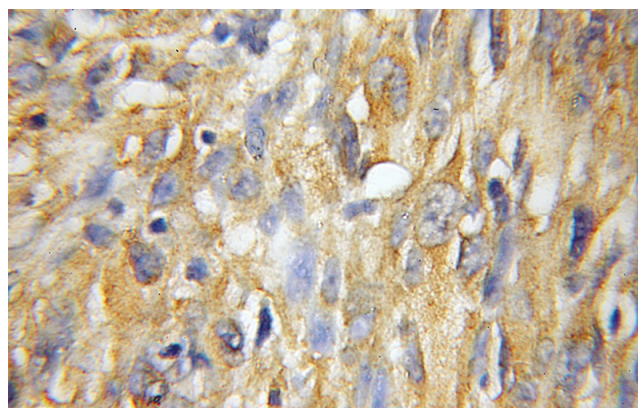
IHC: 1:20-1:200

IF: 1:10-1:100

## Antibody description

MTX2 Rabbit Polyclonal antibody. Positive IF detected in HepG2 cells. Positive IHC detected in human gliomas tissue. Positive IP detected in mouse heart tissue. Positive WB detected in mouse heart tissue, mouse kidney tissue, rat heart tissue. Observed molecular weight by Western-blot: 25-29kd

## Validations



Immunohistochemical of paraffin-embedded human gliomas using Catalog No:112885(MTX2 antibody) at dilution of 1:50 (under 10x lens)

## Preparation

This antibody was obtained by immunization of MTX2 recombinant protein (Accession Number: XM\_047442985). Purification method: Antigen affinity purified.

## Formulation

PBS with 0.1% sodium azide and 50% glycerol pH 7.3.

## Storage

Store at -20°C. DO NOT ALIQUOT

## Clonality

Polyclonal

## Ig Type

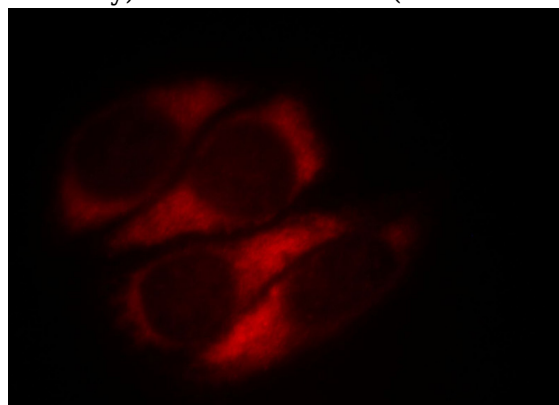
Rabbit IgG

## Applications

ELISA, IHC, IF, IP, WB

## Dilutions

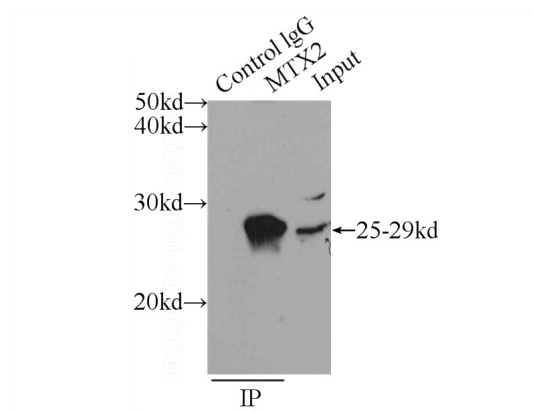
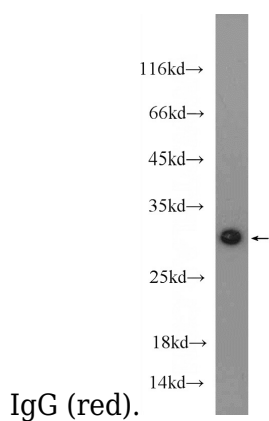
Recommended Dilution:



Immunofluorescent analysis of HepG2 cells, using MTX2 antibody Catalog No:112885 at 1:25 dilution and Rhodamine-labeled goat anti-rabbit

# MTX2 antibody

Catalog Number: 112885



mouse heart tissue were subjected to SDS PAGE followed by western blot with Catalog No:112885(MTX2 Antibody) at dilution of 1:600

IP Result of anti-MTX2 (IP:Catalog No:112885, 3ug; Detection:Catalog No:112885 1:300) with mouse heart tissue lysate 4000ug.