

# Cynomolgus c-Met/HGFR (Fc Tag) recombinant protein



Catalog Number: 502885

## General Information

### Protein Construction

A DNA sequence encoding the cynomolgus/rhesus MET (NP\_001162100.1) (Met1-Thr932) was expressed with the Fc region of human IgG1 at the C-terminus. Cynomolgus and Rhesus MET sequences are identical.

### Organism

Cynomolgus

### Expression Host

Human Cells

## QC Testing

### Activity

Immobilized Cynomolgus HGF (Cat:503008) at 10 µg/ml (100 µl/well) can bind Cynomolgus MET-Fc, EC<sub>50</sub> of Cynomolgus MET-Fc is 0.04-0.09 µg/ml.

### Purity

(66.7+31.5) % as determined by SDS-PAGE

### Endotoxin

< 1.0 EU per µg of the protein as determined by the LAL method

### Stability

Samples are stable for up to twelve months from date of receipt at -70°C

### Predicted N terminal

Glu 25

### Molecular Mass

The recombinant cynomolgus/rhesus MET comprises 1146 amino acids and has a calculated molecular mass of 128.3 KDa. The apparent molecular mass of it is approximately 100.2 and 42.5 KDa in SDS-PAGE under reducing conditions.

### Formulation

Lyophilized from sterile PBS, pH 7.4.

1. 5 % trehalose and mannitol are added as protectants before lyophilization.

2. Please contact us for any concerns or special requirements.

## Usage Guide

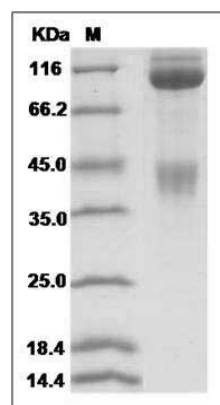
### Storage

Store it under sterile conditions at -20°C to -80°C. It is recommended that the protein be aliquoted for optimal storage. Avoid repeated freeze-thaw cycles.

### Reconstitution

Adding sterile water, prepare a stock solution of 0.25 mg/ml. Concentration is measured by UV-Vis.

### SDS-PAGE



Cynomolgus / Rhesus c-MET / HGFR Protein (Fc Tag) SDS-PAGE