

# beta Tubulin antibody



Catalog Number: 108485

## Product name

beta Tubulin antibody

## Specificity

Human, Mouse, Rat; other species not tested.

## Antibody description

beta Tubulin Rabbit Polyclonal antibody. Positive IP detected in mouse brain tissue. Positive WB detected in multi-cells/tissue, A431 cells, COLO 320 cells, HEK-293 cells, HeLa cells, HepG2 cells, human brain tissue, Jurkat cells, mouse brain tissue, Neuro-2a cells, NIH/3T3 cells, rat brain tissue, SH-SY5Y cells. Positive IHC detected in mouse brain tissue, human brain tissue, rat brain tissue. Positive IF detected in HeLa cells. Observed molecular weight by Western-blot: 50-55 kDa

## Preparation

This antibody was obtained by immunization of beta Tubulin recombinant protein (Accession Number: NM\_006086). Purification method: Antigen affinity purified.

## Formulation

PBS with 0.1% sodium azide and 50% glycerol pH 7.3.

## Storage

Store at -20°C. DO NOT ALIQUOT

## Clonality

Polyclonal

## Ig Type

Rabbit IgG

## Applications

ELISA, WB, IHC, IF, IP

## Dilutions

Recommended Dilution:

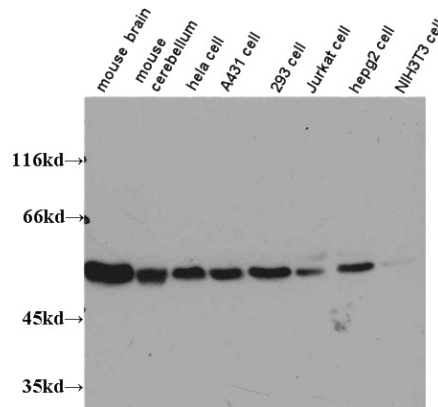
WB: 1:500-1:5000

IP: 1:500-1:5000

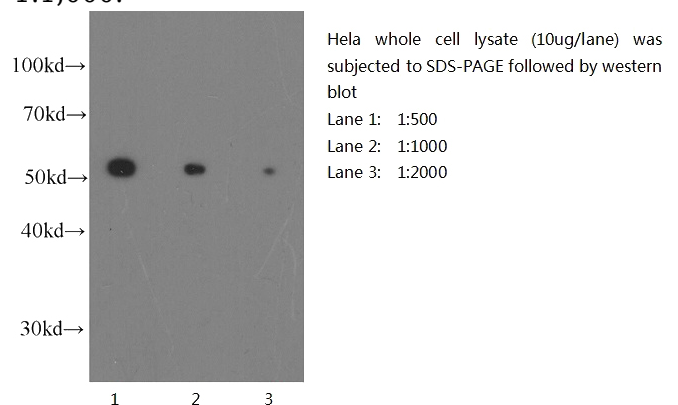
IHC: 1:20-1:200

IF: 1:10-1:100

## Validations



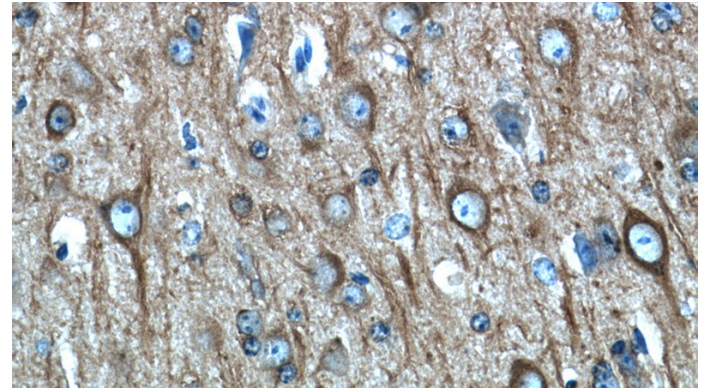
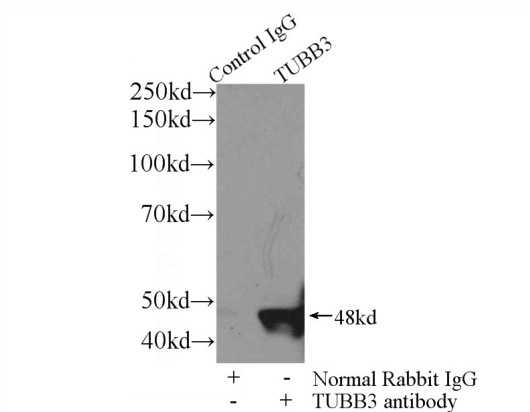
WB results on multiple cells/tissues with anti-Tubulin-beta (Catalog No:117306) at dilution 1:1,000.



Western blot of HeLa cell with anti-Tubulin-Beta (Catalog No:117306) at various dilutions.

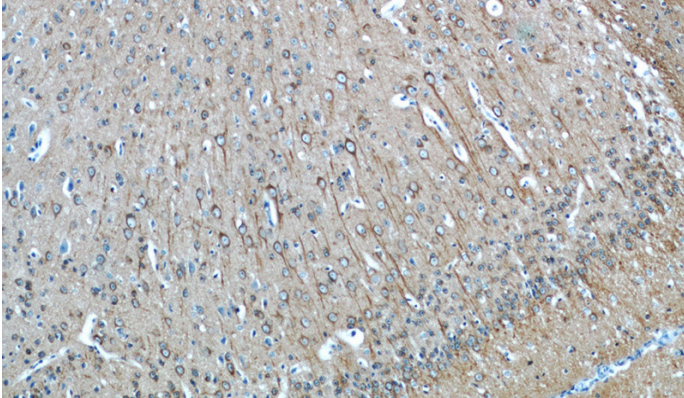
# beta Tubulin antibody

Catalog Number: 108485

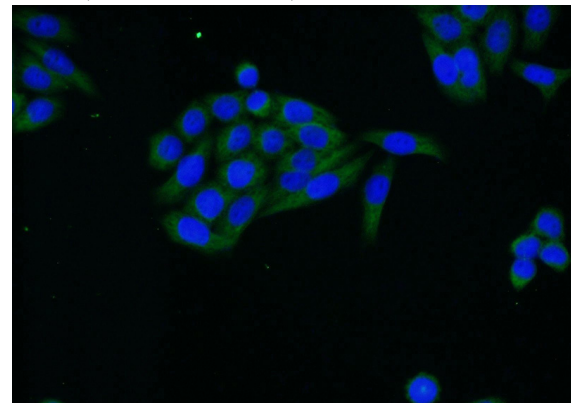


Immunohistochemistry of paraffin-embedded mouse brain tissue slide using Catalog No:117306(Tubulin-beta Antibody) at dilution of 1:50 (under 40x lens)

IP Result of anti-Tubulin-beta (IP:Catalog No:117306, 3ug; Detection:Catalog No:117306 1:1000) with mouse brain tissue lysate 3600ug.



Immunohistochemistry of paraffin-embedded mouse brain tissue slide using Catalog No:117306(Tubulin-beta Antibody) at dilution of 1:50 (under 10x lens)



Immunofluorescent analysis of HeLa cells using Catalog No:117306(Tubulin-beta Antibody) at dilution of 1:25 and Alexa Fluor 488-conjugated AffiniPure Goat Anti-Rabbit IgG(H+L)