

# Tuberin-Specific antibody

Catalog Number: 116485

## Product name

Tuberin-Specific antibody

IHC: 1:20-1:200

IF: 1:10-1:100

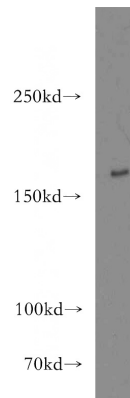
## Specificity

Human, Mouse, Rat; other species not tested.

## Antibody description

Tuberin-Specific Rabbit Polyclonal antibody. Positive IHC detected in human kidney tissue. Positive IF detected in Hela cells. Positive WB detected in mouse lung tissue, mouse liver tissue, mouse skeletal muscle tissue, NIH/3T3 cells. Observed molecular weight by Western-blot: 170-180 kDa

## Validations



## Preparation

This antibody was obtained by immunization of Peptide (Accession Number: NM\_000548). Purification method: Antigen affinity purified.

mouse lung tissue were subjected to SDS PAGE followed by western blot with Catalog No:116485(TSC2-Specific antibody) at dilution of 1:300

## Formulation

PBS with 0.02% sodium azide and 50% glycerol pH 7.3.

## Storage

Store at -20°C. DO NOT ALIQUOT

## Clonality

Polyclonal

## Ig Type

Rabbit IgG

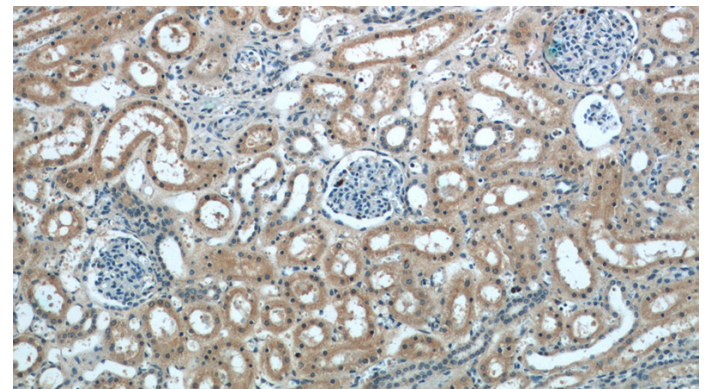
## Applications

ELISA, WB, IF, IHC

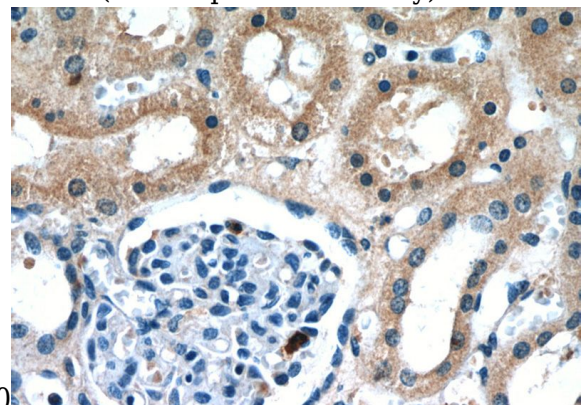
## Dilutions

Recommended Dilution:

WB: 1:200-1:2000



Immunohistochemistry of paraffin-embedded human kidney slide using Catalog No:116485(TSC2-Specific Antibody) at dilution of 1:50



Immunohistochemistry of paraffin-embedded

# Tuberin-Specific antibody



Catalog Number: 116485

---

human kidney slide using Catalog  
No:116485(TSC2-Specific Antibody) at dilution of

Immunofluorescent analysis of Hela cells, using  
TSC2 antibody Catalog No:116485 at 1:25 dilution  
and Rhodamine-labeled goat anti-rabbit IgG (red).

