

# RASSF8 antibody



Catalog Number: 114485

## Product name

RASSF8 antibody

## Specificity

human, mouse, rat; other species not tested.

## Antibody description

RASSF8 Rabbit Polyclonal antibody. Positive WB detected in mouse liver tissue. Observed molecular weight by Western-blot: 45kd

## Preparation

This antibody was obtained by immunization of RASSF8 recombinant protein (Accession Number: NM\_007211). Purification method: Antigen affinity purified.

## Formulation

PBS with 0.02% sodium azide and 50% glycerol pH 7.3.

## Storage

Store at -20°C. DO NOT ALIQUOT

## Clonality

Polyclonal

## Ig Type

Rabbit IgG

## Applications

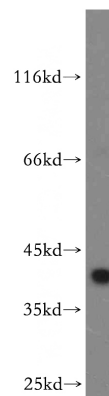
ELISA, WB

## Dilutions

Recommended Dilution:

WB: 1:200-1:1000

## Validations



mouse liver tissue were subjected to SDS PAGE followed by western blot with Catalog No:114485(RASSF8 antibody) at dilution of 1:100