

ETFDH antibody

Catalog Number: 110485

Product name

ETFDH antibody

Specificity

Human, Mouse, Rat; other species not tested.

Antibody description

ETFDH Rabbit Polyclonal antibody. Positive IHC detected in human prostate cancer tissue, human kidney tissue, human liver tissue. Positive WB detected in mouse brain tissue, HEK-293 cells, human liver tissue, mouse kidney tissue, mouse liver tissue, mouse skeletal muscle tissue, rat brain tissue. Positive IP detected in mouse brain tissue. Observed molecular weight by Western-blot: 64kd

Preparation

This antibody was obtained by immunization of ETFDH recombinant protein (Accession Number: NM_004453). Purification method: Antigen affinity purified.

Formulation

PBS with 0.1% sodium azide and 50% glycerol pH 7.3.

Storage

Store at -20°C. DO NOT ALIQUOT

Clonality

Polyclonal

Ig Type

Rabbit IgG

Applications

ELISA, IHC, IP, WB

Dilutions

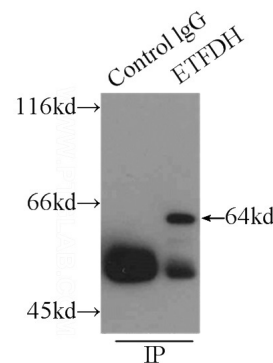
Recommended Dilution:

WB: 1:500-1:5000

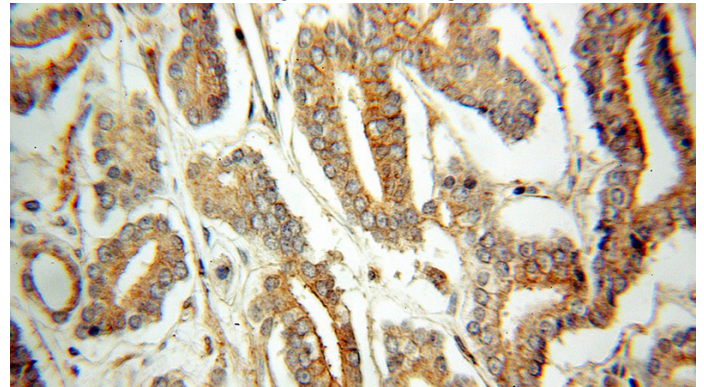
IP: 1:200-1:2000

IHC: 1:20-1:200

Validations



IP Result of anti-ETFDH (IP:Catalog No:110485, 3ug; Detection:Catalog No:110485 1:500) with mouse brain tissue lysate 8000ug.



Immunohistochemical of paraffin-embedded human prostate cancer using Catalog No:110485(ETFDH antibody) at dilution of 1:50

ETFDH antibody



Catalog Number: 110485

mouse brain tissue were subjected to SDS PAGE followed by western blot with Catalog No:110485(ETFDH Antibody) at dilution of 1:1000

