

# Anti-MyoD1 Rabbit antibody



Catalog Number: 167085

## Product name

Anti-MyoD1 Rabbit antibody

## Specificity

Human, Mouse, Rat, Chicken

## Antibody description

MyoD1 Rabbit polyclonal antibody

## Preparation

Antigen: The antiserum was produced against synthesized peptide derived from human MyoD around the non-acetylation site of Lys99/102. AA range:61-110

## Formulation

Liquid in PBS containing 50% glycerol, 0.5% BSA and 0.02% sodium azide.

## Storage

Store at 4°C short term. Store at -20°C long term. Avoid freeze / thaw cycle.

## Clonality

Polyclonal

## Ig Type

Rabbit IgG

## Applications

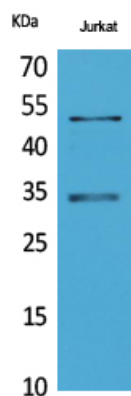
WB, ELISA

## Dilutions

WB: 1/500 - 1/2000

ELISA: 1/20000

## Validations



Western Blot analysis of Jurkat cells using MyoD Polyclonal Antibody. Secondary antibody was diluted at 1:20000