

SEC61alpha antibody



Catalog Number: 115085

Product name

SEC61alpha antibody

IHC: 1:20-1:200

IF: 1:10-1:100

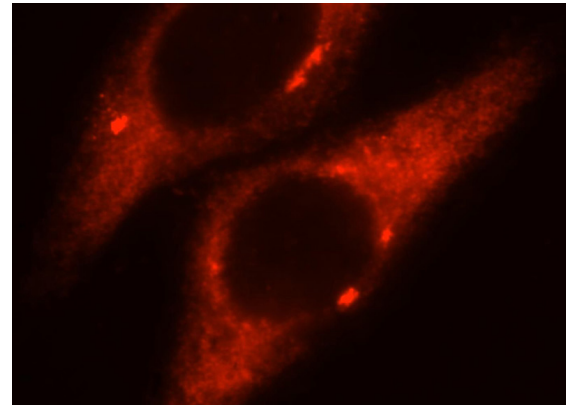
Specificity

Human, Mouse, Rat; other species not tested.

Validations

Antibody description

SEC61alpha Rabbit Polyclonal antibody. Positive WB detected in mouse thymus tissue, mouse liver tissue. Positive IHC detected in human liver tissue. Positive IF detected in HepG2 cells. Observed molecular weight by Western-blot: 70 kDa



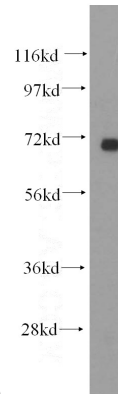
Preparation

This antibody was obtained by immunization of SEC61alpha recombinant protein (Accession Number: BC002951). Purification method: Antigen affinity purified.

Immunofluorescent analysis of HepG2 cells, using SEC61A1 antibody Catalog No:115085 at 1:25 dilution and Rhodamine-labeled goat anti-rabbit

Formulation

PBS with 0.02% sodium azide and 50% glycerol pH 7.3.



IgG (red).

Storage

Store at -20°C. DO NOT ALIQUOT

Clonality

Polyclonal

mouse thymus tissue were subjected to SDS PAGE followed by western blot with Catalog No:115085(SEC61A1 antibody) at dilution of 1:200

Ig Type

Rabbit IgG

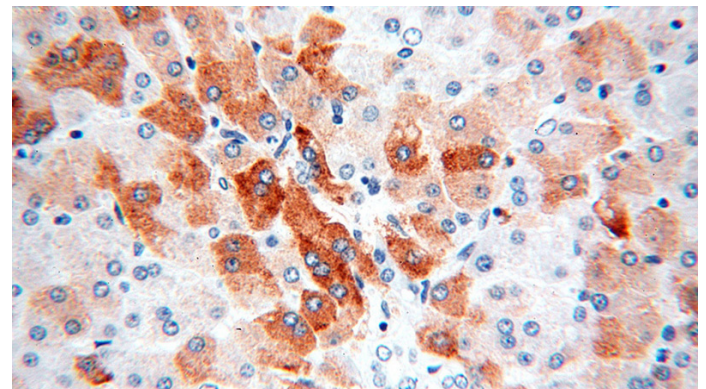
Applications

ELISA, WB, IHC, IF

Dilutions

Recommended Dilution:

WB: 1:200-1:2000

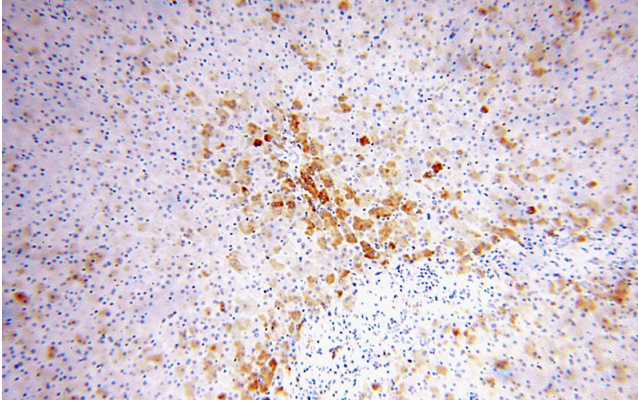


Immunohistochemical of paraffin-embedded

SEC61alpha antibody

Catalog Number: 115085

human liver using Catalog No:115085(SEC61A1 antibody) at dilution of 1:100 (under 40x lens)



Immunohistochemical of paraffin-embedded human liver using Catalog No:115085(SEC61A1 antibody) at dilution of 1:100 (under 10x lens)