

# Anti-ApoE/Apolipoprotein E antibody



Catalog Number: 104085

## Product name

Anti-ApoE/Apolipoprotein E antibody

## Specificity

Human APOE / apolipoprotein E

## Antibody description

Rabbit polyclonal to ApoE/Apolipoprotein E

## Preparation

Produced in rabbits immunized with purified, recombinant Human APOE / apolipoprotein E (rh APOE / apolipoprotein E; P02649; Lys 19-His 317). APOE / apolipoprotein E specific IgG was purified by Human APOE / apolipoprotein E affinity chromatography.

## Formulation

0.2 µm filtered solution in PBS with 5% trehalose

## Storage

This antibody can be stored at 2°C-8°C for one month without detectable loss of activity. Antibody products are stable for twelve months from date of receipt when stored at -20°C to -80°C.

Preservative-Free.

Sodium azide is recommended to avoid contamination (final concentration 0.05%-0.1%). It is toxic to cells and should be disposed of properly. Avoid repeated freeze-thaw cycles.

## Clonality

Polyclonal

## Ig Type

Rabbit IgG

## Applications

ELISA, IHC-P

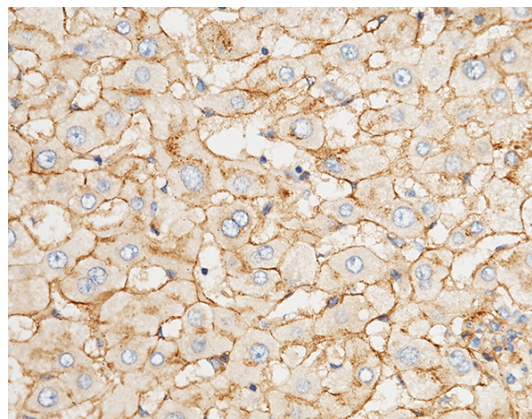
## Dilutions

ELISA: 0.1-0.2 µg/mL

This antibody can be used at 0.1-0.2 µg/mL with the appropriate secondary reagents to detect Human ApoE. The detection limit for Human ApoE is approximately 0.00975 ng/well.

IHC-P: 0.1-2 µg/mL

## Validations



APOE / apolipoprotein E Antibody, Rabbit PAb, Antigen Affinity Purified, Immunohistochemistry

Immunochemical staining of human APOE in human liver with rabbit polyclonal antibody (1 µg/mL, formalin-fixed paraffin embedded sections).