

KLHDC3 antibody



Catalog Number: 112085

Product name

KLHDC3 antibody

IHC: 1:20-1:200

IF: 1:20-1:200

Specificity

Human, Mouse, Rat; other species not tested.

Antibody description

KLHDC3 Rabbit Polyclonal antibody. Positive IHC detected in human testis tissue. Positive IF detected in PC-3 cells. Positive WB detected in mouse testis tissue, PC-3 cells, rat testis tissue. Observed molecular weight by Western-blot: 50 kDa

Preparation

This antibody was obtained by immunization of KLHDC3 recombinant protein (Accession Number: BC041793). Purification method: Antigen affinity purified.

Formulation

PBS with 0.1% sodium azide and 50% glycerol pH 7.3.

Storage

Store at -20°C. DO NOT ALIQUOT

Clonality

Polyclonal

Ig Type

Rabbit IgG

Applications

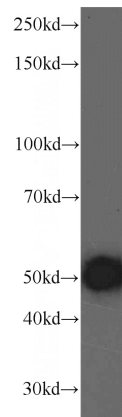
ELISA, WB, IHC, IF

Dilutions

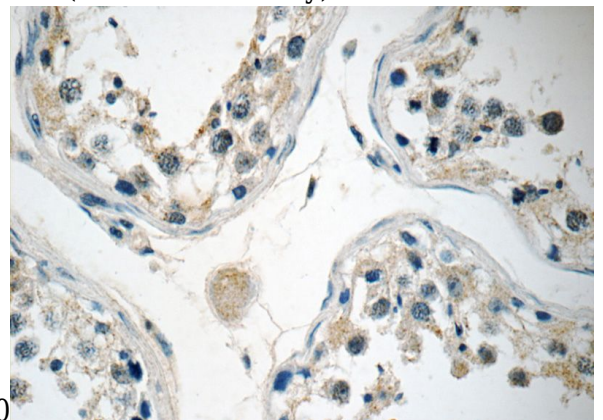
Recommended Dilution:

WB: 1:500-1:5000

Validations

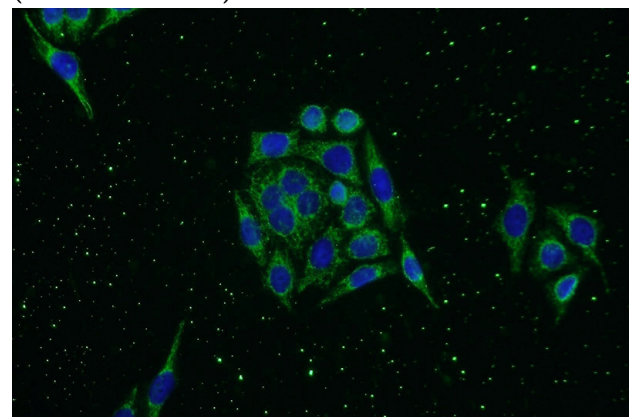


mouse testis tissue were subjected to SDS PAGE followed by western blot with Catalog No:112085(KLHDC3 antibody) at dilution of



1:1500

Immunohistochemistry of paraffin-embedded human testis tissue slide using Catalog No:112085(KLHDC3 Antibody) at dilution of 1:50 (under 40x lens)



KLHDC3 antibody



Catalog Number: 112085

Immunofluorescent analysis of PC-3 cells using Catalog No:112085(KLHDC3 Antibody) at dilution of 1:50 and Alexa Fluor 488-conjugated AffiniPure Goat Anti-Rabbit IgG(H+L)