

Anti-Caspase-6 Rabbit antibody



Catalog Number: 167775

Product name

Anti-Caspase-6 Rabbit antibody

Specificity

Human, Mouse

Antibody description

Caspase-6 Rabbit monoclonal antibody

Preparation

Antigen: A synthetic peptide of human Caspase-6

Formulation

50nM Tris-Glycine(pH 7.4), 0.15M NaCl,
40%Glycerol, 0.01% sodium azide and 0.05% BSA

Storage

Store at 4°C short term. Store at -20°C long term.
Avoid freeze / thaw cycle.

Clonality

Monoclonal

Ig Type

Rabbit IgG

Applications

WB, IHC-P, ICC/IF, FC

Dilutions

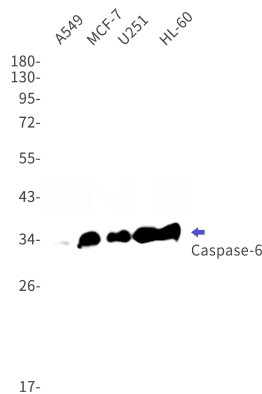
WB: 1/1000

IHC: 1/20

ICC/IF: 1/20

FC: 1/20

Validations



Western blot detection of Caspase-6 in A549, MCF-7, U251, HL-60 cell lysates using Caspase-6 Rabbit mAb(1:1000 diluted). Predicted band size: 33kDa. Observed band size: 33kDa, 11kDa (cleavage).