

# LLGL2 Polyclonal Antibody



Catalog Number: 165775

## Product name

LLGL2 Polyclonal Antibody

## Specificity

Human, Mouse, Rat

## Antibody description

Polyclonal antibody to LLGL2

## Preparation

Antigen: Recombinant fusion protein containing a sequence corresponding to amino acids 620-819 of mouse LLGL2 (NP\_663413.2).

## Formulation

PBS with 0.02% sodium azide, 50% glycerol, pH7.3.

## Storage

Store at -20°C. Avoid freeze / thaw cycles.

## Clonality

Polyclonal

## Ig Type

Rabbit IgG

## Applications

WB, IHC, IF

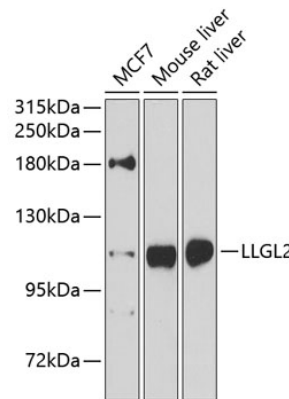
## Dilutions

WB 1:500 - 1:2000

IHC 1:50 - 1:200

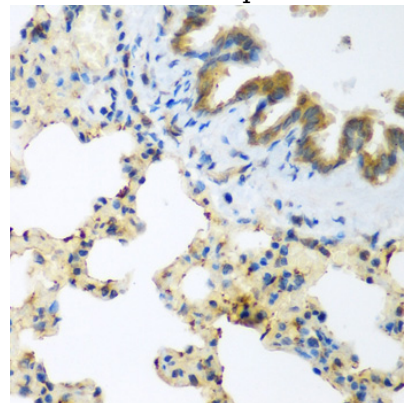
IF 1:50 - 1:200

## Validations



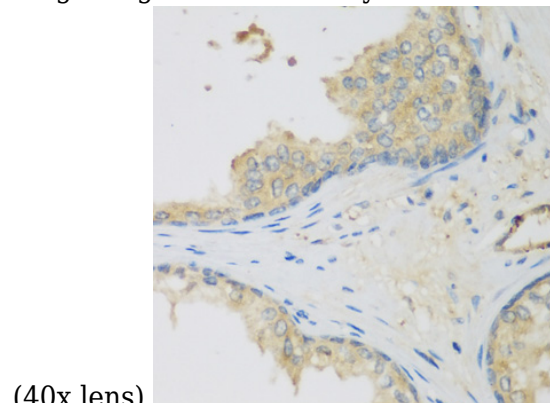
## Western blot - LLGL2 Polyclonal Antibody

Western blot analysis of extracts of various cell lines, using LLGL2 antibody at 1:1000 dilution. Secondary antibody: HRP Goat Anti-Rabbit IgG (H+L) at 1:10000 dilution. Lysates/proteins: 25ug per lane. Blocking buffer: 3% nonfat dry milk in TBST. Detection: ECL Enhanced Kit. Exposure time: 5s.



## Immunohistochemistry - LLGL2 Polyclonal Antibody

Immunohistochemistry of paraffin-embedded rat lung using LLGL2 antibody at dilution of 1:200



(40x lens).

# LLGL2 Polyclonal Antibody

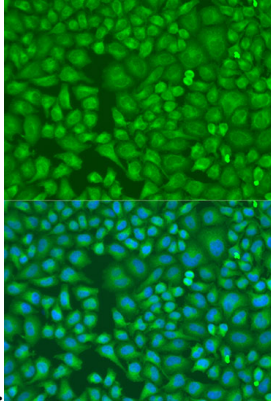


Catalog Number: 165775

---

## Immunohistochemistry - LLGL2 Polyclonal Antibody

Immunohistochemistry of paraffin-embedded human prostate using LLGL2 antibody at dilution



of 1:200 (40x lens).

## Immunofluorescence - LLGL2 Polyclonal Antibody

Immunofluorescence analysis of U2OS cells using LLGL2 antibody at dilution of 1:100. Blue: DAPI for nuclear staining.