

Anti-COPG1 antibody



Catalog Number: 142775

Product name

Anti-COPG1 antibody

Specificity

Human COPG

Antibody description

Rabbit Polyclonal to Human COPG1

Preparation

Produced in rabbits immunized with a synthetic peptide corresponding to the N-terminus of the Human COPG, and purified by antigen affinity chromatography.

Formulation

0.2 µm filtered solution in PBS

Storage

This antibody can be stored at 2°C-8°C for one month without detectable loss of activity. Antibody products are stable for twelve months from date of receipt when stored at -20°C to -80°C.

Preservative-Free.

Sodium azide is recommended to avoid contamination (final concentration 0.05%-0.1%). It

is toxic to cells and should be disposed of properly. Avoid repeated freeze-thaw cycles.

Clonality

Polyclonal

Ig Type

Rabbit IgG

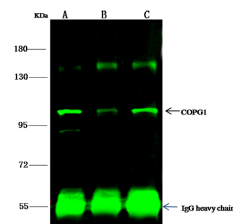
Applications

IP

Dilutions

IP: 1-4 µl/mg of lysate

Validations



Item	Lanes	A	B	C
Sample (whole cell lysate)		TIP-1	HuT78	U87MG
Sample quantity		0.5 mg		
IP antibody		4 µl		
Protein G agarose		15 µl of 50% Protein G Agarose		
Gel		7.5% SDS-PAGE reducing gel		
Primary antibody		KLJ1-SMCC-SINOA2952/KLJ1-SMCC-SINOA2946 antibody at 10 µg/ml		
Secondary antibody		DyLight 800-labeled antibody to rabbit IgG (Q111), at 1:5000 dilution		

Human COPG Immunoprecipitation(IP) 14684