

# SLC38A4 antibody



Catalog Number: 115375

## Product name

SLC38A4 antibody

## Specificity

Human; other species not tested.

## Antibody description

SLC38A4 Rabbit Polyclonal antibody. Positive IHC detected in human kidney tissue. Positive WB detected in L02 cells, Jurkat cells. Observed molecular weight by Western-blot: 61 kDa

## Preparation

This antibody was obtained by immunization of SLC38A4 recombinant protein (Accession Number: NM\_018018). Purification method: Antigen affinity purified.

## Formulation

PBS with 0.02% sodium azide and 50% glycerol pH 7.3.

## Storage

Store at -20°C. DO NOT ALIQUOT

## Clonality

Polyclonal

## Ig Type

Rabbit IgG

## Applications

ELISA, WB, IHC

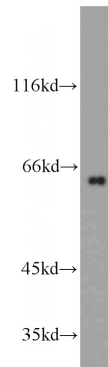
## Dilutions

Recommended Dilution:

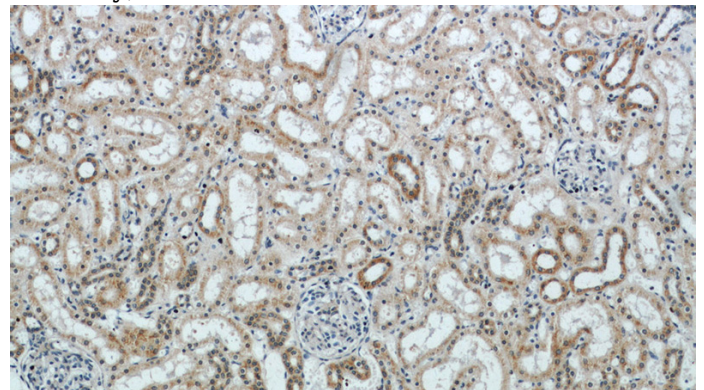
WB: 1:200-1:2000

IHC: 1:20-1:200

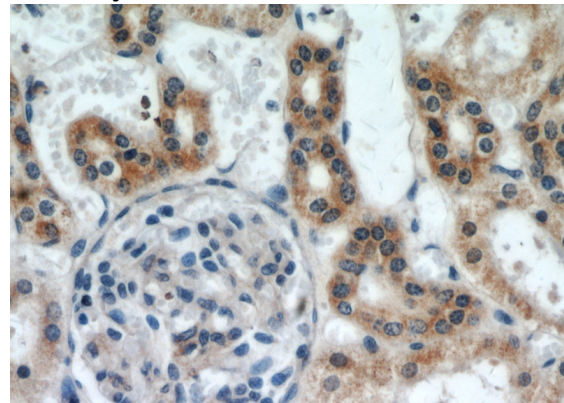
## Validations



L02 cells were subjected to SDS PAGE followed by western blot with Catalog No:115375(SLC38A4 antibody) at dilution of 1:200



Immunohistochemical of paraffin-embedded human kidney using Catalog No:115375(SLC38A4 antibody) at dilution of 1:50 (under 10x lens)



Immunohistochemical of paraffin-embedded human kidney using Catalog No:115375(SLC38A4 antibody) at dilution of 1:50 (under 40x lens)