

Anti-CTP synthase/CTPS Rabbit antibody



Catalog Number: 168675

Product name

Anti-CTP synthase/CTPS Rabbit antibody

Ig Type

Rabbit IgG

Specificity

Human, Mouse, Rat

Applications

WB, FC

Antibody description

CTP synthase/CTPS Rabbit monoclonal antibody

Dilutions

1:1000

Preparation

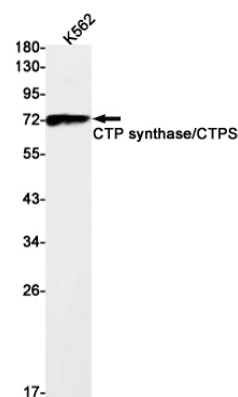
Antigen: A synthetic peptide of human CTP synthase

1:20

Validations

Formulation

Supplied in 50nM Tris-Glycine(pH 7.4), 0.15M NaCl, 40%Glycerol, 0.01% sodium azide and 0.05% BSA.



Storage

Store at 4°C short term. Aliquot and store at -20°C long term. Avoid freeze / thaw cycle.

Western blot detection of CTP synthase/CTPS in K562 cell lysates using CTP synthase/CTPS Rabbit mAb(1:1000 diluted).Predicted band size:67kDa.Observed band size:67kDa.

Clonality

Monoclonal