

General Information

Gene Name Synonym

ENA-78(1-78); Epithelial-derived neutrophil-activating protein 78; Neutrophil-activating peptide ENA-78; Small-inducible cytokine B5; ENA-78(8-78); ENA-78(9-78)

Protein Construction

A DNA sequence encoding the human CXCL5 (P42830) (Arg45-Asn114) was expressed, with a N-terminal Met.

Organism

Human

Expression Host

E. coli

QC Testing

Purity

> 95 % as determined by SDS-PAGE

Endotoxin

Please contact us for more information.

Stability

Samples are stable for up to twelve months from date of receipt at -70°C

Predicted N terminal

Met

Molecular Mass

The recombinant human CXCL5 consists of 71 amino acids and predicts a molecular mass of 7.8 KDa. It migrates as an approximately 8 KDa band in SDS-PAGE under reducing conditions.

Formulation

Lyophilized from sterile 80% acetonitrile, 0.1% TFA, 20% H₂O

- 5 % trehalose and mannitol are added as protectants before lyophilization.
- Please contact us for any concerns or special requirements.

Usage Guide

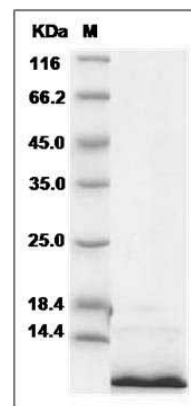
Storage

Store it under sterile conditions at -20°C to -80°C. It is recommended that the protein be aliquoted for optimal storage. Avoid repeated freeze-thaw cycles.

Reconstitution

Adding sterile water, prepare a stock solution of 0.25 mg/ml. Concentration is measured by UV-Vis.

SDS-PAGE



Human CXCL5 Protein SDS-PAGE