

# Anti-ELK1 Rabbit antibody



Catalog Number: 167275

## Product name

Anti-ELK1 Rabbit antibody

IHC: 1/20

ICC/IF: 1/20

## Specificity

Human, Mouse, Rat

FC: 1/20

IP: 1/20

ChIP: 1/20

## Antibody description

ELK1 Rabbit polyclonal antibody

## Preparation

Antigen: A synthetic peptide of human ELK1

## Formulation

Supplied in 50nM Tris-Glycine(pH 7.4), 0.15M NaCl, 40%Glycerol, 0.01% sodium azide and 0.05% BSA.

## Storage

Store at -20°C. Stable for 12 months from date of receipt.

## Clonality

Polyclonal

## Ig Type

Rabbit IgG

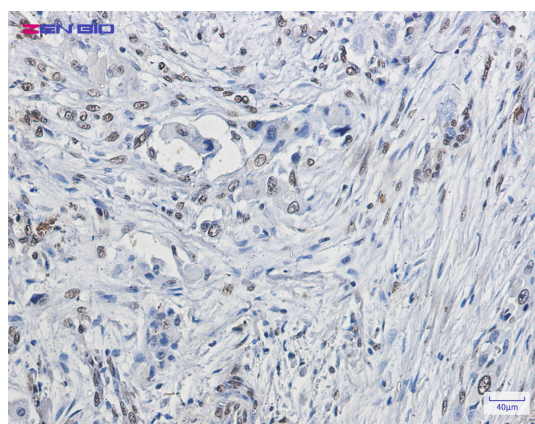
## Applications

WB, IHC-P, ICC/IF, FC, IP, ChIP

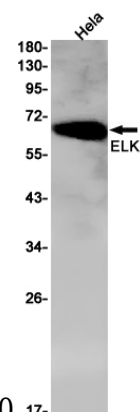
## Dilutions

WB: 1/1000

## Validations



Immunohistochemistry of ELK1 in paraffin-embedded Human lung cancer tissue using ELK1



Rabbit pAb at dilution 1/20

Western blot detection of ELK1 in HeLa cell lysates using ELK1 Rabbit pAb(1:1000 diluted). Predicted band size:45kDa.Observed band size:62kDa.