

# TMC1 Polyclonal Antibody



Catalog Number: 165975

## Product name

TMC1 Polyclonal Antibody

## Specificity

Human, Mouse, Rat

## Antibody description

Polyclonal antibody to TMC1

## Preparation

Antigen: A synthetic peptide corresponding to a sequence within amino acids 600-700 of human TMC1 (NP\_619636.2).

## Formulation

PBS with 0.02% sodium azide, 50% glycerol, pH7.3.

## Storage

Store at -20°C. Avoid freeze / thaw cycles.

## Clonality

Polyclonal

## Ig Type

Rabbit IgG

## Applications

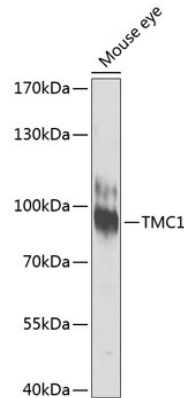
WB, IHC

## Dilutions

WB 1:500 - 1:2000

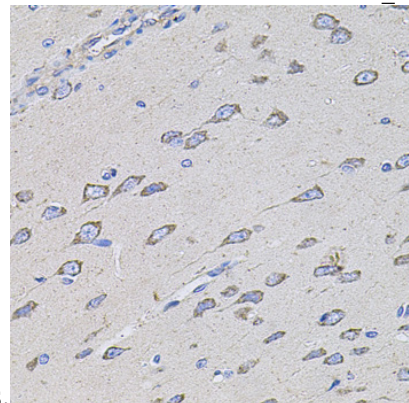
IHC 1:50 - 1:200

## Validations



## Western blot - TMC1 Polyclonal Antibody

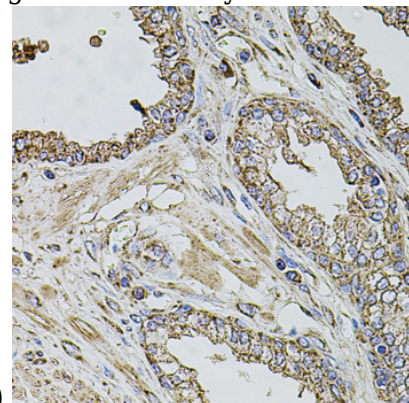
Western blot analysis of extracts of mouse eye, using TMC1 antibody at 1:1000 dilution. Secondary antibody: HRP Goat Anti-Rabbit IgG (H+L) at 1:10000 dilution. Lysates/proteins: 25ug per lane. Blocking buffer: 3% nonfat dry milk in TBST. Detection: ECL Enhanced Kit. Exposure



time: 90s.

## Immunohistochemistry - TMC1 Polyclonal Antibody

Immunohistochemistry of paraffin-embedded rat brain using TMC1 antibody at dilution of 1:100



(40x lens).

# TMC1 Polyclonal Antibody

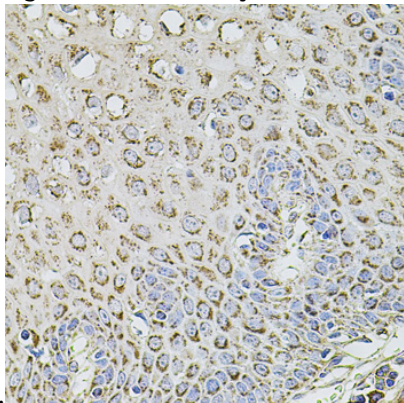


Catalog Number: 165975

---

## Immunohistochemistry - TMC1 Polyclonal Antibody

Immunohistochemistry of paraffin-embedded human prostate using TMC1 antibody at dilution



of 1:100 (40x lens).

## Immunohistochemistry - TMC1 Polyclonal Antibody

Immunohistochemistry of paraffin-embedded human esophagus using TMC1 antibody at dilution of 1:100 (40x lens).