

# SAT1 antibody

Catalog Number: 114975

## Product name

SAT1 antibody

IP: 1:200-1:1000

IHC: 1:20-1:200

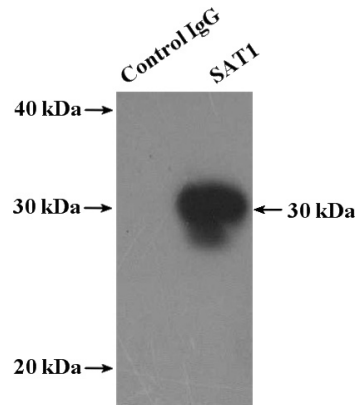
## Specificity

Human, Mouse, Rat; other species not tested.

## Validations

## Antibody description

SAT1 Rabbit Polyclonal antibody. Positive IHC detected in human ovary tumor tissue. Positive IP detected in mouse liver tissue. Positive WB detected in mouse liver tissue. Observed molecular weight by Western-blot: 25-30



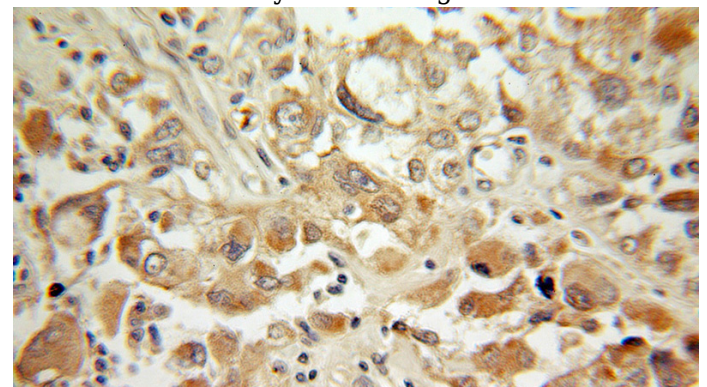
## Preparation

This antibody was obtained by immunization of SAT1 recombinant protein (Accession Number: NM\_002970). Purification method: Antigen affinity purified.

IP Result of anti-SAT1 (IP:Catalog No:114975, 4ug; Detection:Catalog No:114975 1:300) with mouse liver tissue lysate 4000ug.

## Formulation

PBS with 0.1% sodium azide and 50% glycerol pH 7.3.



## Storage

Store at -20°C. DO NOT ALIQUOT

## Clonality

Polyclonal

Immunohistochemical of paraffin-embedded human ovary tumor using Catalog No:114975(SAT1 antibody) at dilution of 1:100

## Ig Type

Rabbit IgG

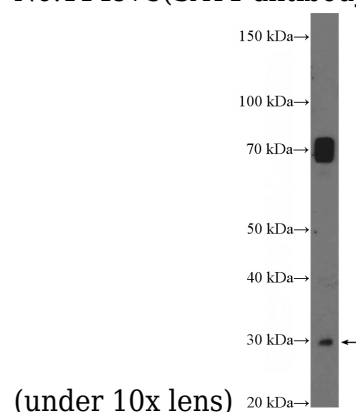
## Applications

ELISA, IHC, WB, IP

## Dilutions

Recommended Dilution:

WB: 1:200-1:1000



(under 10x lens)

mouse liver tissue were subjected to SDS PAGE followed by western blot with Catalog

# SAT1 antibody



Catalog Number: 114975

---

No:114975(SAT1 Antibody) at dilution of 1:300