

# Anti-SYNE1 antibody

Catalog Number: 176575

## Product name

Anti-SYNE1 antibody

## Specificity

Human, Mouse, Rat

## Antibody description

Rabbit monoclonal antibody to SYNE1

## Preparation

This antigen of this antibody was recombinant protein

## Formulation

Liquid, 1\*TBS (pH7.4), 0.05% BSA, 40% Glycerol.  
Preservative: 0.05% Sodium Azide.

## Storage

Store at +4°C after thawing. Aliquot store at -20°C or -80°C. Avoid repeated freeze / thaw cycles.

## Clonality

Monoclonal

## Ig Type

Rabbit IgG

## Applications

WB, ICC, IF, IHC-P, FC

## Dilutions

WB: 1:500-1:2,000

ICC: 1:200-1:1,000

IHC-P: 1:50-1:200

FC: 1:50-1:100

## Validations

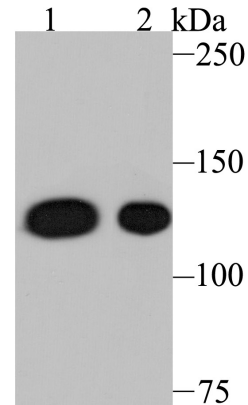


Fig1: Western blot analysis of Nesprin 1 on different lysates using anti-Nesprin 1 antibody at 1/500 dilution.; Positive control.; Lane 1: A549; Lane 2: Mouse spleen tissue

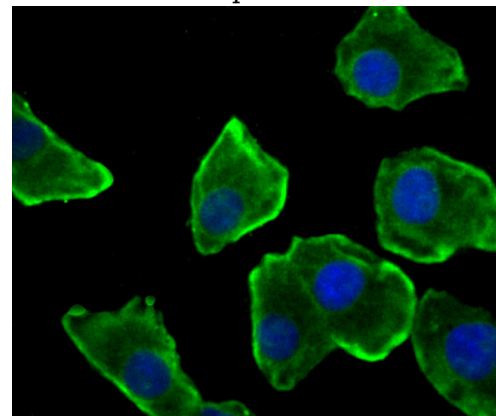


Fig2: ICC staining Nesprin 1 in A549 cells (green). The nuclear counter stain is DAPI (blue). Cells were fixed in paraformaldehyde, permeabilised with 0.25% Triton X100/PBS.

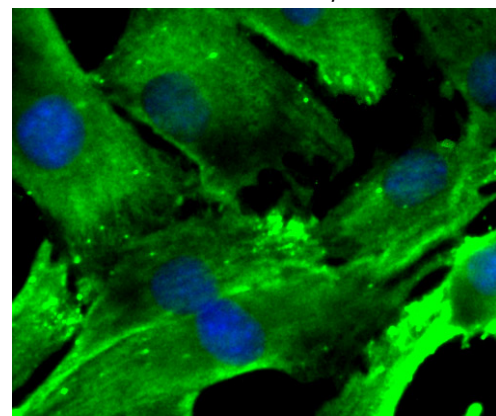


Fig3: ICC staining Nesprin 1 in C2C12 cells (green). The nuclear counter stain is DAPI (blue). Cells were fixed in paraformaldehyde, permeabilised with 0.25% Triton X100/PBS.

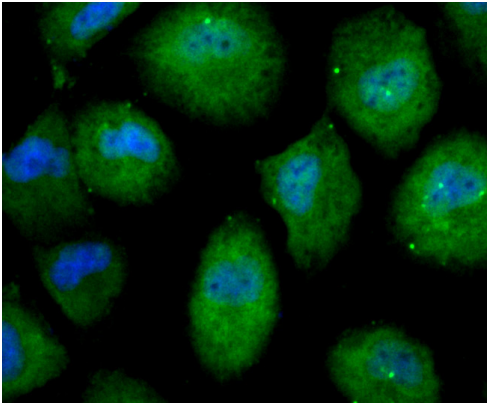


Fig4: ICC staining Nesprin 1 in HUVEC cells (green). The nuclear counter stain is DAPI (blue). Cells were fixed in paraformaldehyde, permeabilised with 0.25% Triton X100/PBS.

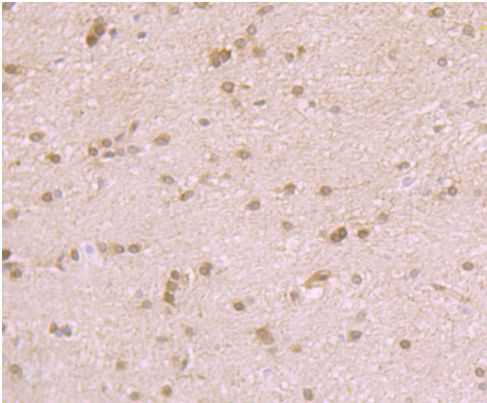


Fig5: Immunohistochemical analysis of paraffin-embedded rat brain tissue using anti-Nesprin 1 antibody. Counter stained with hematoxylin.

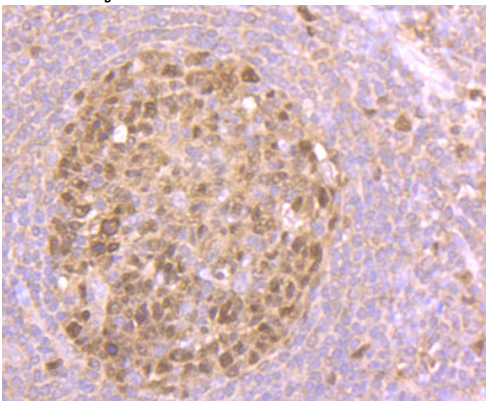


Fig6: Immunohistochemical analysis of paraffin-embedded human tonsil tissue using anti-Nesprin 1 antibody. Counter stained with hematoxylin.

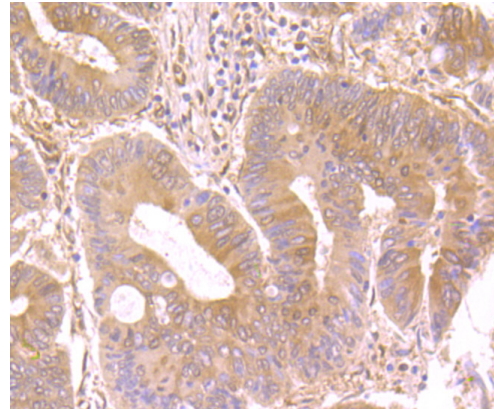
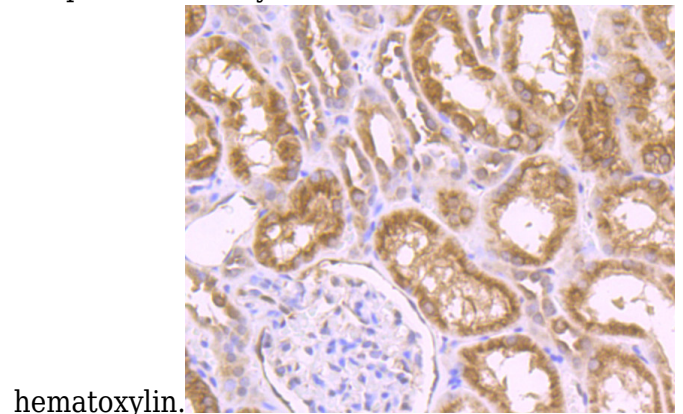


Fig7: Immunohistochemical analysis of paraffin-embedded human colon cancer tissue using anti-Nesprin 1 antibody. Counter stained with



hematoxylin.

Fig8: Immunohistochemical analysis of paraffin-embedded human kidney tissue using anti-Nesprin 1 antibody. Counter stained with hematoxylin.

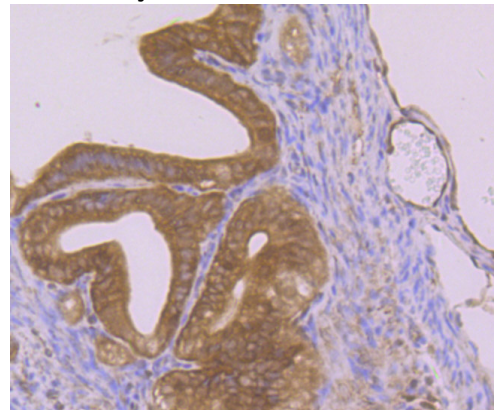


Fig9: Immunohistochemical analysis of paraffin-embedded mouse fallopian tubes tissue using anti-Nesprin 1 antibody. Counter stained with

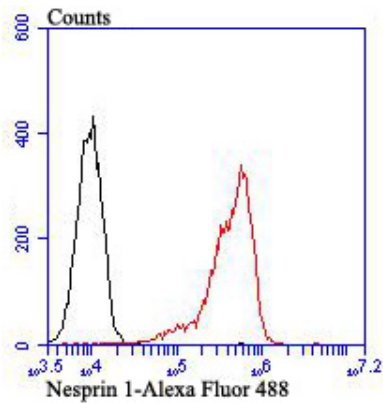


Fig10: Flow cytometric analysis of Daudi cells with Nesprin 1 antibody at 1/100 dilution (red) compared with an unlabelled control (cells without incubation with primary antibody; black).Alexa Fluor 488-conjugated goat anti-rabbit IgG was used as the seco

hematoxylin.